



HUMAN SERVICES  
DEPARTMENT

Susana Martinez, Governor  
Brent Earnest, Secretary  
Marilyn Martinez, Director

---

## General Information Memorandum

---

### ISD-GI 16-01

**TO:** ISD Employees

**FROM:**  Marilyn Martinez, Director, Income Support Division

**RE:** FFY 2015 SNAP Performance Report

**DATE:** January 7, 2016

Attached please find the eleventh issue of the Supplemental Nutrition Assistance Program (SNAP) Performance Report for FFY 2015. This report includes all Quality Control (QC) findings received for the review month of October 2014 through August 2015. All errors for October 2014 through August 2015 have been finalized. Along with payment and negative accuracy rates, data included in this report is the recertification, 7-day, and 30-day application processing timeliness. The Performance Goals for the state for FFY 2015 are:

Payment Accuracy of 96% or better

Negative Accuracy Rate of 99%

Expedite application processing timeliness of 98%

30-day application timeliness of 98% or better

Effective **March 1, 2014, per IPP 14-01**, counties with a payment accuracy rate of 96% or better must review cases at Level 2; all others must review cases at Level 1.

- **Level 1:** A county office with an error rate above **4.0%** is required to complete 35 full reviews per supervisor per month. Of the 35 reviews, at least 20 must be reviewed prior to disposition of the case (Second Party Reviews). The remaining 15 must be reviewed using the case read function in ASPEN. **These completed reviews must be completed by the last working day of the month.** All of the reviews must contain SNAP as a Category of Eligibility (COE).
- **Level 2:** A county office with an error rate of **4.0% or less** is required to complete 25 full reviews per supervisor per month. Of the 25 reviews, at least 15 must be reviewed prior to disposition of the case (Second Party Reviews). The remaining 10 must be reviewed using the case read function in ASPEN. **These completed reviews must be completed**

**by the last working day of the month.** All of the reviews must contain SNAP as a Category of Eligibility (COE).

Effective **March 1, 2014, per IPP 14-01**, counties will review cases using Criteria #152 for both Level 1 and Level 2 Case Read Reviews.

All supervisory reviews should include a review of income, household composition, deductions, timeliness, documentation, and barriers and the NVRA settlement agreement requirements were addressed. Supervisors should review cases from each one of their staff. A spreadsheet for each county office has been created to track the Second Party Reviews. The spreadsheets are located on the QIS Reports Monitoring shared drive in the folder named Second Party Reviews. Each region will have a folder containing the individual offices. **The spreadsheets must be completed monthly by the last calendar day of the month.**

The County Director and the Quality Improvement Section (QIS) will monitor to ensure that all required reviews are done monthly.

If counties are found to be non-compliant with mandatory case reads, **County Directors**, as part of a remedial Corrective Action Plan, will review a minimum 5 cases per supervisor prior to the last working day of the month.

Please share this data with staff as appropriate. If there are any questions or comments, please contact Carolyn Craven of the Quality Assessment Bureau at 827-7224 or e-mail at [Carolyn.Craven@state.nm.us](mailto:Carolyn.Craven@state.nm.us).

Attachment

# Quality Improvement Section SNAP Performance Report

## Quality Control Finding FFY 2015

### 1. STATE - Cumulative Payment Error Rates

<b>Total Paid</b>	<b>\$239,683</b>		
<b>Total Dollar Errors</b>	<b>\$15,313</b>	<b>Total Error Rate %</b>	<b>6.39%</b>
Total Dollar Over	\$9,983	% Error Rate Over	4.17%
Total Dollar Under	\$2,778	% Error Rate Under	1.16%
Total Dollar Ineligible	\$2,552	% Error Rate Ineligible	1.06%

#### Cumulative Case Error Rate

<b>Total Reviewed</b>	<b>915</b>
<b>% in Error</b>	<b>12.35%</b>

<b>Agency Error (Dollar Amount):</b>		<b>Agency % Error Rate:</b>	
<b>\$9,066</b>		<b>3.78%</b>	

<b>Cases Dropped</b>	<b>163</b>
<b>Correct</b>	<b>802</b>
<b>Overpaid</b>	<b>73</b>
<b>Underpaid</b>	<b>27</b>
<b>Ineligible</b>	<b>13</b>

<b>Recipient Error (Dollar Amount):</b>		<b>Recipient % Error Rate:</b>	
<b>\$6,247</b>		<b>2.61%</b>	

### 2. ADMINISTRATIVE OFFICES - Cumulative Payment Error Rates

HIPAC Counties		Agency \$ Error	Agency % Error	Recipient \$ Error	Recipient % Error	Total \$ Error	Total \$ Paid	County Error Rate	HIPAC Share	State Share
01	SE Bernalillo	\$337	100%	\$0	0%	\$337	\$10,052	3.35%	3.78%	2.20%
07	W.Dona Ana	\$503	73%	\$186	27%	\$689	\$14,236	4.84%	7.72%	4.50%
17	McKinley	\$388	80%	\$96	20%	\$484	\$11,609	4.17%	5.42%	3.16%
23	Sandoval	\$724	57%	\$552	43%	\$1,276	\$16,018	7.97%	14.30%	8.33%
24	San Juan	\$638	88%	\$89	12%	\$727	\$13,453	5.40%	8.15%	4.75%
26	Santa Fe	\$266	32%	\$561	68%	\$827	\$13,335	6.20%	9.27%	5.40%
35	NW Bernalillo	\$1,292	70%	\$560	30%	\$1,852	\$14,934	12.40%	20.75%	12.09%
36	SW Bernalillo	\$450	61%	\$282	39%	\$732	\$21,045	3.48%	8.20%	4.78%
38	S. Dona Ana	\$412	49%	\$432	51%	\$844	\$12,695	6.65%	9.46%	5.51%
39	NE Bernalillo	\$877	76%	\$280	24%	\$1,157	\$14,892	7.77%	12.96%	7.56%
<b>HIPAC Sub Totals</b>		<b>\$5,887</b>	<b>66%</b>	<b>\$3,038</b>	<b>34%</b>	<b>\$8,925</b>	<b>\$142,269</b>	<b>6.27%</b>	<b>100.00%</b>	<b>58.28%</b>

Non-HIPAC Counties		Agency \$ Error	Agency % Error	Recipient \$ Error	Recipient % Error	Total \$ Error	Total \$ Paid	County Error Rate	Non-HIPAC Share	State Share
03	Chaves	\$428	66%	\$222	34%	\$650	\$6,177	10.52%	10.18%	4.24%
04	Coffax/Union	\$357	76%	\$111	24%	\$468	\$2,273	20.59%	7.33%	3.06%
05	Curry	\$143	100%	\$0	0%	\$143	\$8,740	1.64%	2.24%	0.93%
08	Eddy	\$79	100%	\$0	0%	\$79	\$1,942	4.07%	1.24%	0.52%
09	Grant/Hidalgo	\$0		\$0		\$0	\$4,788	0.00%	0.00%	0.00%
10	Guadalupe/DeBaca	\$0	0%	\$104	100%	\$104	\$544	19.12%	1.63%	0.68%
13	Lea	\$0		\$0		\$0	\$4,370	0.00%	0.00%	0.00%
14	Lincoln	\$0		\$0		\$0	\$2,497	0.00%	0.00%	0.00%
16	Luna	\$88	100%	\$0	0%	\$88	\$3,908	2.25%	1.38%	0.57%
19	Otero	\$149	33%	\$309	67%	\$458	\$3,698	12.39%	7.17%	2.99%
20	Quay	\$0		\$0		\$0	\$743	0.00%	0.00%	0.00%
21	Rio Arriba	\$268	48%	\$294	52%	\$562	\$6,978	8.05%	8.80%	3.67%
22	Roosevelt	\$255	37%	\$436	63%	\$691	\$2,407	28.71%	10.82%	4.51%
25	San Miguel	\$74	15%	\$405	85%	\$479	\$2,868	16.70%	7.50%	3.13%
27	Sierra	\$87	100%	\$0	0%	\$87	\$3,404	2.56%	1.36%	0.57%
28	Socorro	\$92	21%	\$345	79%	\$437	\$3,819	11.44%	6.84%	2.85%
29	Taos	\$789	64%	\$446	36%	\$1,235	\$6,328	19.52%	19.33%	8.07%
30	Torrance	\$0		\$0		\$0	\$4,461	0.00%	0.00%	0.00%
32	S. Valencia	\$0	0%	\$116	100%	\$116	\$4,913	2.36%	1.82%	0.76%
33	Cibola	\$92	100%	\$0	0%	\$92	\$3,817	2.41%	1.44%	0.60%
34	Eddy/Artesia	\$0		\$0		\$0	\$2,252	0.00%	0.00%	0.00%
37	E. Dona Ana	\$86	17%	\$421	83%	\$507	\$9,052	5.60%	7.94%	3.31%
42	N. Valencia	\$192	100%	\$0	0%	\$192	\$7,435	2.58%	3.01%	1.25%
<b>Non-HIPAC Sub Totals</b>		<b>\$3,179</b>	<b>50%</b>	<b>\$3,209</b>	<b>50%</b>	<b>\$6,388</b>	<b>\$97,414</b>	<b>6.56%</b>	<b>100.00%</b>	<b>41.72%</b>

**Regional Cumulative SNAP Performance Report  
Quality Control Finding FFY2015**

**3. STATE - Cumulative Payment Error Rates**

<b>Total Paid</b>	<b>\$239,683</b>		
<b>Total Dollar Errors</b>	<b>\$15,313</b>	<b>Total Error Rate %</b>	<b>6.39%</b>
Total Dollar Over	\$9,983	% Error Rate Over	4.17%
Total Dollar Under	\$2,778	% Error Rate Under	1.16%
Total Dollar Ineligible	\$2,552	% Error Rate Ineligible	1.06%

<b>Agency Error (Dollar Amount):</b>	<b>Agency % Error Rate:</b>
<b>\$9,066</b>	<b>3.78%</b>

<b>Recipient Error (Dollar Amount):</b>	<b>Recipient % Error Rate:</b>
<b>\$6,247</b>	<b>2.61%</b>

**Cumulative Case Error Rate**

<b>Total Reviewed</b>	915
<b>% In Error</b>	12.35%

<b>Cases Dropped</b>	163
<b>Correct</b>	802
<b>Overpaid</b>	73
<b>Underpaid</b>	27
<b>Ineligible</b>	13

**4. REGIONAL - Cumulative Payment Error Rates**

NE Region	Agency \$ Error	Recipient \$ Error	Total \$ Error	Total \$ Paid	County Error Rate
04 Colfax	\$357	\$111	\$468	\$2,273	20.59%
10 Guadalupe/DeBaca	\$0	\$104	\$104	\$544	19.12%
20 Quay	\$0	\$0	\$0	\$743	0.00%
21 Rio Arriba	\$268	\$294	\$562	\$6,978	8.05%
23 Sandoval	\$724	\$552	\$1,276	\$16,018	7.97%
25 San Miguel	\$74	\$405	\$479	\$2,868	16.70%
26 Santa Fe	\$266	\$561	\$827	\$13,335	6.20%
29 Taos	\$789	\$446	\$1,235	\$6,328	19.52%
<b>NE Region Totals</b>	<b>\$2,478</b>	<b>\$2,473</b>	<b>\$4,951</b>	<b>\$49,087</b>	<b>10.09%</b>

Region Share
9.45%
2.10%
0.00%
11.35%
25.77%
9.67%
16.70%
24.94%
<b>100.00%</b>

State Share
3.06%
0.68%
0.00%
3.67%
8.33%
3.13%
5.40%
8.07%
<b>32.33%</b>

NW Region	Agency \$ Error	Recipient \$ Error	Total \$ Error	Total \$ Paid	County Error Rate
17 McKinley	\$388	\$96	\$484	\$11,609	4.17%
24 San Juan	\$638	\$89	\$727	\$13,453	5.40%
27 Sierra	\$87	\$0	\$87	\$3,404	2.56%
28 Socorro	\$92	\$345	\$437	\$3,819	11.44%
32 S. Valencia	\$0	\$116	\$116	\$4,913	2.36%
33 Cibola	\$92	\$0	\$92	\$3,817	2.41%
42 N. Valencia	\$192	\$0	\$192	\$7,435	2.58%
<b>NW Region Totals</b>	<b>\$1,489</b>	<b>\$646</b>	<b>\$2,135</b>	<b>\$48,450</b>	<b>4.41%</b>

22.67%
34.05%
4.07%
20.47%
5.43%
4.31%
8.99%
<b>100.00%</b>

3.16%
4.75%
0.57%
2.85%
0.76%
0.60%
1.25%
<b>13.94%</b>

SW Region	Agency \$ Error	Recipient \$ Error	Total \$ Error	Total \$ Paid	County Error Rate
07 W. Dona Ana	\$503	\$186	\$689	\$14,236	4.84%
09 Grant/Hidalgo	\$0	\$0	\$0	\$4,788	0.00%
16 Luna	\$88	\$0	\$88	\$3,908	2.25%
19 Otero	\$149	\$309	\$458	\$3,698	12.39%
37 E. Dona Ana	\$86	\$421	\$507	\$9,052	5.60%
38 S. Dona Ana	\$412	\$432	\$844	\$12,695	6.65%
<b>SW Region Totals</b>	<b>\$1,238</b>	<b>\$1,348</b>	<b>\$2,586</b>	<b>\$48,377</b>	<b>5.35%</b>

26.64%
0.00%
3.40%
17.71%
19.61%
32.64%
<b>100.00%</b>

4.50%
0.00%
0.57%
2.99%
3.31%
5.51%
<b>16.89%</b>

SE Region	Agency \$ Error	Recipient \$ Error	Total \$ Error	Total \$ Paid	County Error Rate
03 Chaves	\$428	\$222	\$650	\$6,177	10.52%
05 Curry	\$143	\$0	\$143	\$8,740	1.64%
08 Eddy	\$79	\$0	\$79	\$1,942	4.07%
13 Lea	\$0	\$0	\$0	\$4,370	0.00%
14 Lincoln	\$0	\$0	\$0	\$2,497	0.00%
22 Roosevelt	\$255	\$436	\$691	\$2,407	28.71%
34 Eddy/Artesia	\$0	\$0	\$0	\$2,252	0.00%
<b>SE Region Totals</b>	<b>\$905</b>	<b>\$658</b>	<b>\$1,563</b>	<b>\$28,385</b>	<b>5.51%</b>

41.59%
9.15%
5.05%
0.00%
0.00%
44.21%
0.00%
<b>100.00%</b>

4.24%
0.93%
0.52%
0.00%
0.00%
4.51%
0.00%
<b>10.21%</b>

Central Region	Agency \$ Error	Recipient \$ Error	Total \$ Error	Total \$ Paid	County Error Rate
01 SE Bernalillo	\$337	\$0	\$337	\$10,052	3.35%
35 NW Bernalillo	\$1,292	\$560	\$1,852	\$14,934	12.40%
36 SW Bernalillo	\$450	\$282	\$732	\$21,045	3.48%
39 NE Bernalillo	\$877	\$280	\$1,157	\$14,892	7.77%
30 Torrance	\$0	\$0	\$0	\$4,461	0.00%
<b>Central Region Totals</b>	<b>\$2,956</b>	<b>\$1,122</b>	<b>\$4,078</b>	<b>\$65,384</b>	<b>6.24%</b>

8.26%
45.41%
17.95%
28.37%
0.00%
<b>100.00%</b>

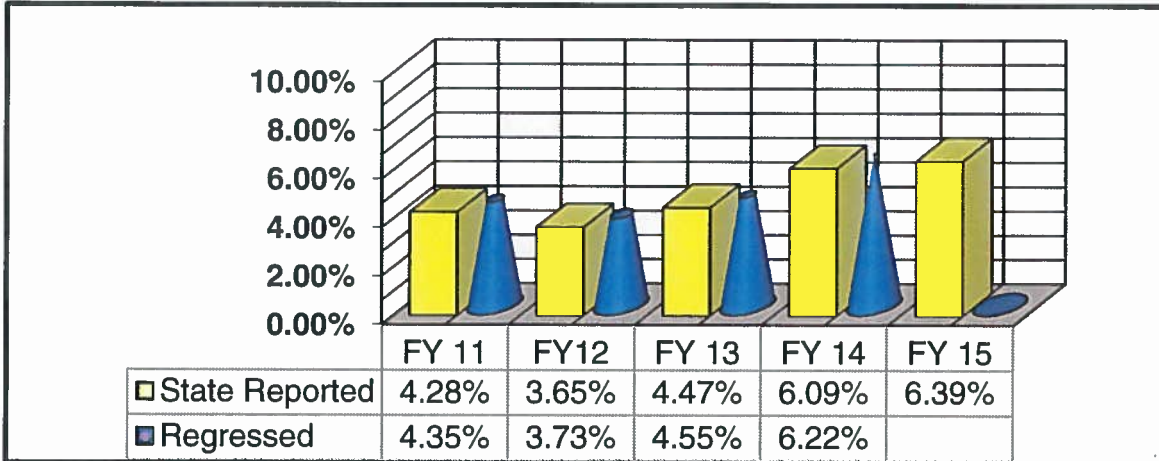
2.20%
12.09%
4.78%
7.56%
0.00%
<b>26.63%</b>

<b>State Totals</b>	<b>\$9,066</b>	<b>\$6,247</b>	<b>\$15,313</b>	<b>\$239,683</b>	<b>6.39%</b>
---------------------	----------------	----------------	-----------------	------------------	--------------

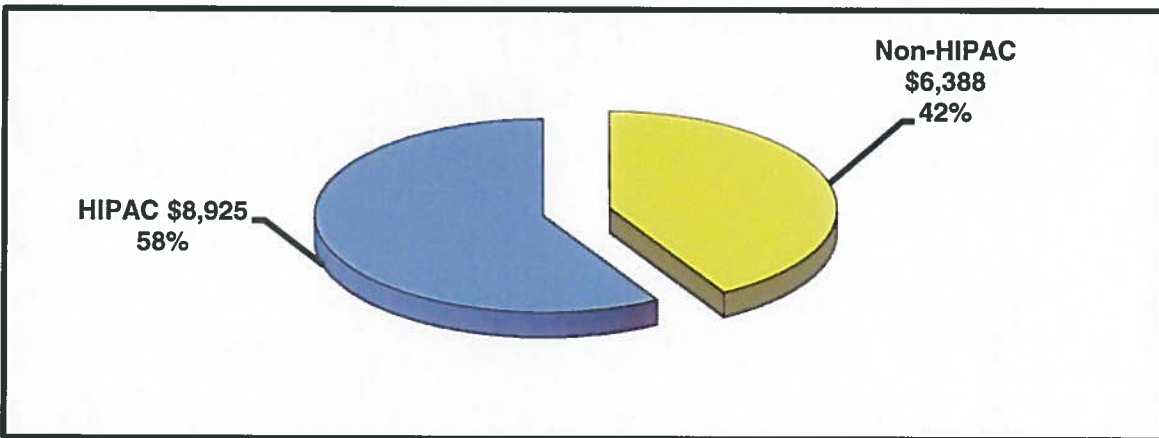
<b>100.00%</b>
----------------

<b>100.00%</b>
----------------

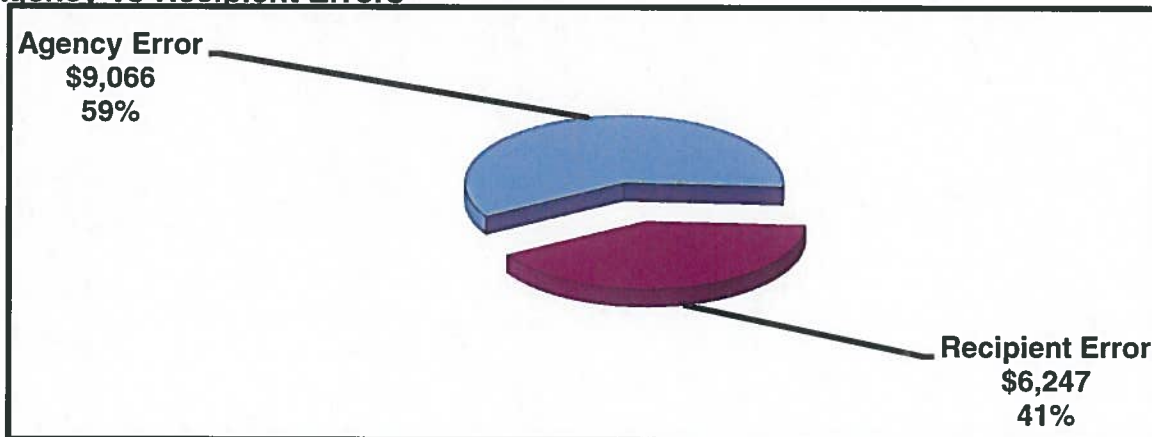
**5. STATE SNAP Error Rates- Current FY Compared to Previous FYs**



**6. HIPAC Dollar Errors - Compared to the Remainder of the State**



**7. Agency-vs-Recipient Errors**



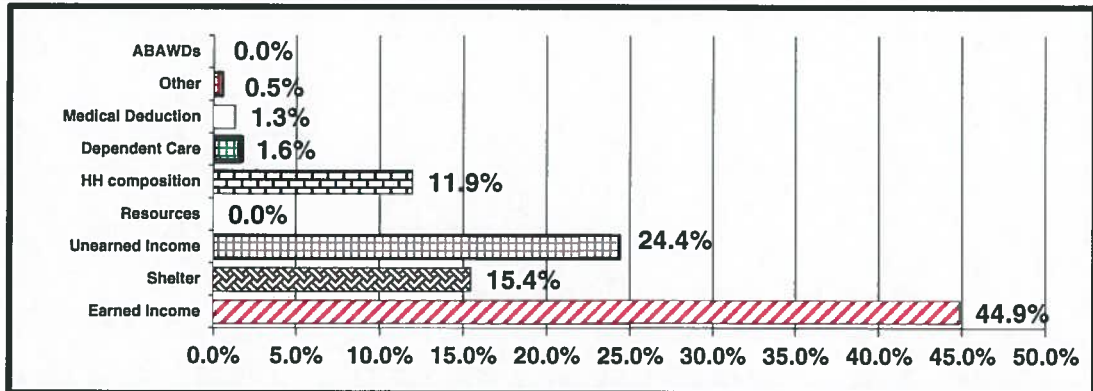
**Average Recipient Error = \$152**

**Average Agency Error = \$126**

**8. AGENCY/RECIPIENT DOLLAR ERROR BREAKDOWN BY GENERAL ELEMENT**

<i>Food Stamps</i>	<i>Agency</i>	<i>Recipient</i>	<i>% Agency Cause</i>
Earned Income	\$4,201	\$2,669	61.1%
Shelter	\$975	\$1,387	41.3%
Unearned Income	\$1,885	\$1,845	50.5%
Resources	\$0	\$0	0.0%
HH composition	\$1,481	\$346	81.1%
Dependent Care	\$250	\$0	100.0%
Medical Deduction	\$195	\$0	100.0%
Other	\$79	\$0	100.0%
ABAWDs	\$0	\$0	0.0%

**9. SNAP DOLLAR ERROR BREAKDOWN BY GENERAL ELEMENT**



**10. SNAP DOLLAR ERROR BREAKDOWN BY SPECIFIC ELEMENT**

<i>Percent</i>	<i>Total</i>	<i>Element</i>	<i>Element Description</i>
43.26%	\$6,625	311	WAGES & SALARIES
8.99%	\$1,376	150	HOUSEHOLD COMPOSITION
14.54%	\$2,226	363	SHELTER DEDUCTION
0.00%	\$0	211	BANK ACCOUNTS
0.89%	\$136	364	SUA
1.94%	\$297	130	CITIZENSHIP/NON-CITIZEN STATUS
1.93%	\$296	344	PA/GA GRANT
0.00%	\$0	520	ARITHMETIC COMPUTATION
3.93%	\$602	342	CONTRIBUTIONS
1.03%	\$158	333	SSI BENEFITS
1.23%	\$189	334	UCB BENEFITS
8.80%	\$1,348	331	RSDI BENEFITS
0.00%	\$0	221	REAL PROPERTY
6.03%	\$923	346	OTHER UEI
1.01%	\$154	111	STUDENT STATUS
1.27%	\$195	365	MEDICAL DEDUCTIONS
0.00%	\$0	170	SOCIAL SECURITY NUMBERS
0.00%	\$0	160	EMPLOYMENT AND TRAINING
0.00%	\$0	140	RESIDENCY
0.00%	\$0	335	WORKERS COMP BENEFITS
1.91%	\$293	350	CHILD SUPPORT
0.00%	\$0	161	ABAWDS
0.00%	\$0	213	OTHER LIQUID ASSETS/PERSONAL PROP
0.00%	\$0	530	TRANSITIONAL BEN
1.60%	\$245	312	SELF-EMPLOYMENT INCOME
0.00%	\$0	332	VA BENEFITS
0.00%	\$0	347	UEI--TANF
0.00%	\$0	371	COMBINED GROSS INCOME
0.00%	\$0	163	VOLUNTARY QUIT
1.63%	\$250	323	DEPENDENT CARE
0.00%	\$0	225	COMBINED RESOURCES

### 11. STATEWIDE CAUSES OF AGENCY ERROR --- FFY 2015

In this table, general cause for agency error is ranked by the top three error causing areas

- R No action on reported information
- P Policy or procedure not applied or not correctly applied
- V Inadequate verification
- M Math or transcription error
- F No action on anticipated or known changes
- X Old or invalid data or coding not removed from ASPEN
- O Other
- S ASPEN or CSED systems caused error

	ALL Err	EI	HHC	UEI
R	\$1,638	\$792	\$61	\$228
P	\$7,428	\$3,409	\$1,420	\$1,657
V	\$0	\$0	\$0	\$0
M	\$0	\$0	\$0	\$0
F	\$0	\$0	\$0	\$0
X	\$0	\$0	\$0	\$0
O	\$0	\$0	\$0	\$0
S	\$0	\$0	\$0	\$0
<b>Total</b>	<b>\$9,066</b>	<b>\$4,201</b>	<b>\$1,481</b>	<b>\$1,885</b>

**Agency errors with "No action on reported information" and "policy or procedure not applied or not correctly applied" account for 100% of agency caused dollar errors.**

**Errors in "earned income", "unearned income", and "Household Composition" elements account for 83% of the agency-caused error rate.**

### 12. DOLLAR ERROR BY: HOUSEHOLD SIZE

	1	2	3	4	5	6+
\$	\$3,780	\$2,033	\$3,200	\$3,477	\$1,676	\$1,147
%	24.7%	13.3%	20.9%	22.7%	10.9%	7.5%

### 13. AVERAGE HOUSEHOLD SIZE

All Cases	2.2
Correct Cases	2.0
Error Cases	2.7
Recipient Error Cases	2.7

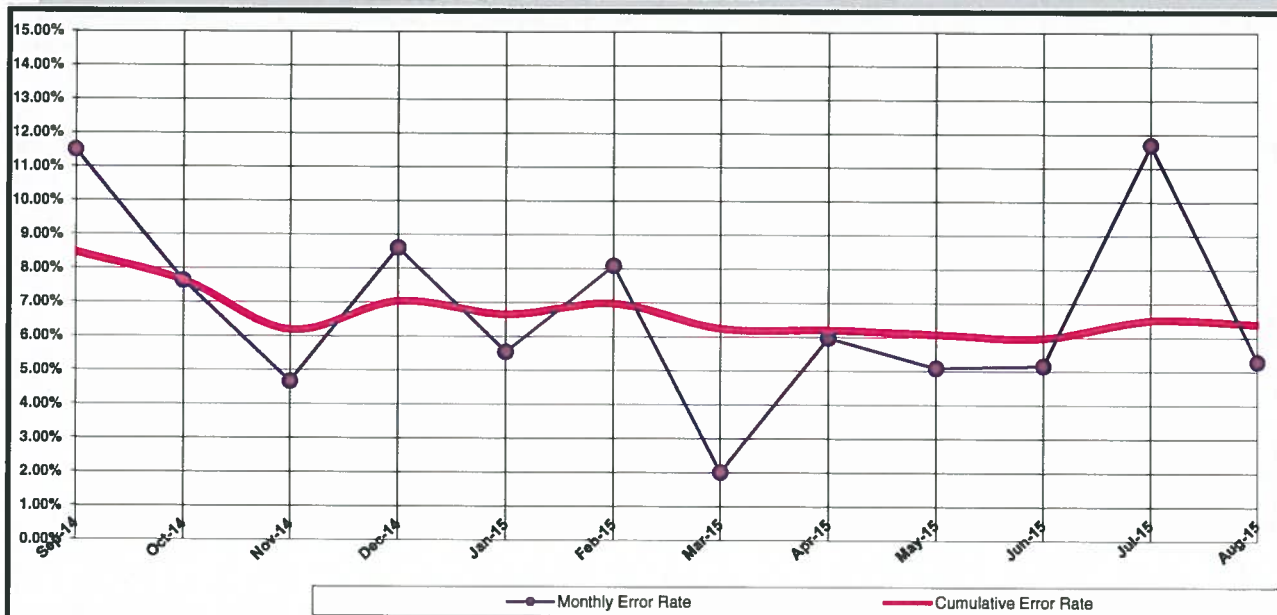
### 14. DOLLAR ERROR BY: TIME OF OCCURRENCE

	\$	%
Approval	\$1,675	10.9%
Recert	\$6,408	41.8%
Change	\$1,315	8.6%
Transitional FS	\$0	0.0%
Semi Annual	\$4,774	31.2%
Annual Report	\$1,141	7.5%

### 15. CASE ERROR BY: TIME OF OCCURRENCE

	#	%
Approval	14	12.4%
Recert	43	38.1%
Change	13	11.5%
Transitional FS	0	0.0%
Semi-Annual	30	26.5%
Annual Report	13	11.5%

### 16. ERROR RATES BY: MONTH AND FFY CUMULATIVE

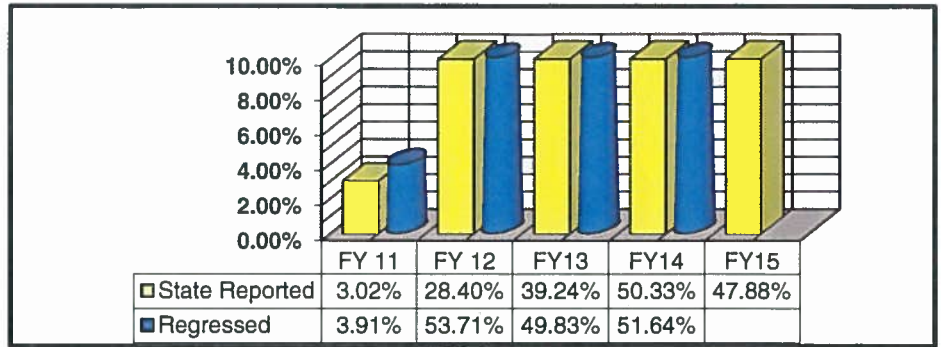


# FFY 2015 Negative Statewide Error Rates

## 1. Cumulative Negative Case Error Rate

Valid	351
Invalid Total	395
Invalid Error	86
Invalid Notice	309
Drop	79
Total Sampled	825
% Invalid Notice	37.45%
% Invalid Error	10.42%
% Invalid Total	47.88%

## 2. State Negative Error Rates



## 3. REGIONAL - Cumulative Negative Error Rates

NE Region		Valid	Invalid	Total	Invalid
04	Colfax	0	4	4	100.0%
10	Guad/DeBaca	2	0	2	0.0%
20	Quay	1	1	2	50.0%
21	Rio Arriba	8	10	18	55.6%
23	Sandoval	16	23	39	59.0%
25	San Miguel	13	6	19	31.6%
26	Santa Fe	18	23	41	56.1%
29	Taos	7	11	18	61.1%
<b>NE Region Totals</b>		<b>65</b>	<b>78</b>	<b>143</b>	<b>54.5%</b>

NW Region		Valid	Invalid	Total	Invalid
17	McKinley	12	16	28	57.1%
24	San Juan	27	21	48	43.8%
27	Sierra	4	5	9	55.6%
28	Socorro	3	3	6	50.0%
32	S. Valencia	2	7	9	77.8%
33	Cibola	9	4	13	30.8%
42	N. Valencia	11	12	23	52.2%
<b>NW Region Totals</b>		<b>68</b>	<b>68</b>	<b>136</b>	<b>50.0%</b>

SE Region		Valid	Invalid	Total	Invalid
03	Chaves	16	10	26	38.5%
05	Curry	8	5	13	38.5%
08	Eddy	8	5	13	38.5%
13	Lea	8	9	17	52.9%
14	Lincoln	3	7	10	70.0%
22	Roosevelt	2	4	6	66.7%
34	Eddy/Artesia	3	5	8	62.5%
<b>SE Region Totals</b>		<b>48</b>	<b>45</b>	<b>93</b>	<b>48.4%</b>

SW Region Totals		Valid	Invalid	Total	Invalid
07	W. Dona Ana	24	14	38	36.8%
09	Grant/Hidalgo	9	7	16	43.8%
16	Luna	3	11	14	78.6%
19	Otero	11	1	12	8.3%
37	E. Dona Ana	10	16	26	61.5%
38	S. Dona Ana	10	18	28	64.3%
<b>SW Region Totals</b>		<b>67</b>	<b>67</b>	<b>134</b>	<b>50.0%</b>

Central Region		Valid	Invalid	Total	Invalid
01	SE Bernalillo	23	34	57	59.6%
35	NW Bernalillo	27	25	52	48.1%
36	SW Bernalillo	33	31	64	48.4%
39	NE Bernalillo	17	42	59	71.2%
30	Torrance	3	5	8	62.5%
<b>Central Region Totals</b>		<b>103</b>	<b>137</b>	<b>240</b>	<b>57.1%</b>

Negative Action Time of Occurrence		
Closure	195	49.4%
Denial	200	50.6%

## 4. Negative Case Element Ranking

Error Elements	Denials	Closures	Invalid	% Of Total		
Notices	143	36.20%	166	42.03%	309	78.23%
Application	50	12.66%	3	0.76%	53	13.42%
Unemployment Compensation	0	0.00%	1	0.25%	1	0.25%
Employment & Training	3	0.76%	5	1.27%	8	2.03%
Combined Net Income	3	0.76%	7	1.77%	10	2.53%
Combined Gross Income	3	0.76%	5	1.27%	8	2.03%
Voluntary Quit/Reduced Work	0	0.00%	0	0.00%	0	0.00%
Other	0	0.00%	2	0.51%	2	0.51%
Wages and Salaries	1	0.25%	1	0.25%	2	0.51%
Work Registration	0	0.00%	1	0.25%	1	0.25%
Student Status	0	0.00%	1	0.25%	1	0.25%







	October 14'	November 14'	December 14'	January 15'	February 15'	March 15'	April 15'	May 15'	June 15'	July 15'	August 15'	September 15'	Yearly Average
<b>NE Region</b>													
Colfax			0.0%				50.0%						33.3%
Guadalupe					0.0%				100.0%		100.0%		66.7%
Quay	100.0%												100.0%
Rio Arriba	66.7%	66.7%	0.0%	100.0%	50.0%	100.0%	100.0%	100.0%	50.0%	100.0%	60.0%		72.4%
Sandoval	100.0%	66.7%	100.0%	66.7%	50.0%	100.0%	80.0%	80.0%	75.0%	50.0%	100.0%		77.8%
San Miguel	100.0%	100.0%		100.0%		100.0%	100.0%	100.0%					100.0%
Santa Fe	50.0%	100.0%	75.0%	75.0%	80.0%	100.0%	50.0%	100.0%	100.0%	75.0%	100.0%		82.9%
Taos		100.0%		100.0%	100.0%			100.0%	0.0%	75.0%	100.0%		84.6%
<b>NE Region TOTAL</b>	<b>77.8%</b>	<b>85.7%</b>	<b>50.0%</b>	<b>83.3%</b>	<b>50.0%</b>	<b>100.0%</b>	<b>76.9%</b>	<b>93.3%</b>	<b>70.0%</b>	<b>72.7%</b>	<b>84.6%</b>		<b>79.1%</b>
<b>NW Region</b>													
Cibola	100.0%				100.0%	0.0%	100.0%	100.0%		0.0%	0.0%		55.6%
McKinley	100.0%	100.0%	50.0%	100.0%	100.0%	50.0%	66.7%	75.0%	75.0%		66.7%		74.1%
San Juan	100.0%	66.7%	66.7%	75.0%	100.0%	100.0%	50.0%	100.0%	100.0%	80.0%	83.3%		81.3%
Sierra	100.0%	100.0%	100.0%			100.0%		100.0%			100.0%		100.0%
Socorro	100.0%	100.0%	100.0%	100.0%		100.0%	100.0%		100.0%	100.0%			100.0%
Valencia South		100.0%	50.0%	100.0%	100.0%	100.0%		100.0%	0.0%	100.0%	100.0%		75.0%
Valencia North				100.0%	100.0%	100.0%		100.0%	66.7%		66.7%		85.7%
<b>NW Region TOTAL</b>	<b>100.0%</b>	<b>87.5%</b>	<b>70.0%</b>	<b>90.0%</b>	<b>100.0%</b>	<b>75.0%</b>	<b>75.0%</b>	<b>90.9%</b>	<b>63.6%</b>	<b>70.0%</b>	<b>72.2%</b>		<b>79.8%</b>
<b>SW Region</b>													
Dona Ana (West)	100.0%	100.0%	33.3%	100.0%	66.7%	100.0%	100.0%	100.0%	60.0%	100.0%	100.0%		83.3%
Dona Ana (East)	50.0%	100.0%	100.0%		100.0%	100.0%	100.0%	100.0%	100.0%	50.0%	100.0%		86.7%
Dona Ana (South)	100.0%	50.0%		100.0%	100.0%	66.7%	100.0%	100.0%	50.0%	60.0%	100.0%		82.8%
Grant/Hidalgo			100.0%		100.0%		100.0%	100.0%	100.0%				100.0%
Luna	100.0%					50.0%		50.0%	100.0%	100.0%			80.0%
Otero	0.0%		100.0%	0.0%			100.0%	100.0%	100.0%	50.0%			76.9%
<b>SW Region Total</b>	<b>80.0%</b>	<b>75.0%</b>	<b>71.4%</b>	<b>83.3%</b>	<b>91.7%</b>	<b>75.0%</b>	<b>100.0%</b>	<b>93.3%</b>	<b>76.9%</b>	<b>69.2%</b>	<b>100.0%</b>		<b>83.7%</b>
<b>SE Region</b>													
Chaves	100.0%	100.0%		100.0%	50.0%	100.0%	50.0%	100.0%	66.7%	100.0%	100.0%		81.3%
Curry		0.0%	100.0%	0.0%	100.0%	100.0%	100.0%	100.0%		100.0%			80.0%
Eddy			100.0%	100.0%	100.0%	100.0%					50.0%		87.5%
Eddy (Artesia)					100.0%	100.0%	100.0%			100.0%			100.0%
Lea	100.0%			50.0%	0.0%		33.3%				100.0%		60.0%
Lincoln		50.0%						100.0%	100.0%	0.0%	100.0%		66.7%
Roosevelt							100.0%	100.0%		100.0%			100.0%
<b>SE Region Total</b>	<b>100.0%</b>	<b>50.0%</b>	<b>100.0%</b>	<b>75.0%</b>	<b>71.4%</b>	<b>100.0%</b>	<b>66.7%</b>	<b>100.0%</b>	<b>75.0%</b>	<b>80.0%</b>	<b>85.7%</b>		<b>79.3%</b>
<b>Central Region</b>													
Bernalillo (NE)	100.0%	66.7%	100.0%		33.3%	66.7%	83.3%	100.0%	100.0%	66.7%	100.0%		79.4%
Bernalillo (NW)	50.0%	50.0%	80.0%	100.0%	100.0%	66.7%	66.7%	100.0%	25.0%	100.0%	80.0%		73.7%
Bernalillo (SE)	100.0%	100.0%	66.7%	100.0%	100.0%	60.0%	100.0%	50.0%	0.0%	100.0%	80.0%		72.4%
Bernalillo (SW)	66.7%	100.0%	100.0%	75.0%	66.7%	50.0%	50.0%	83.3%	71.4%	75.0%	75.0%		76.4%
Torrance	100.0%	100.0%						100.0%	100.0%		100.0%		100.0%
<b>Central Region Total</b>	<b>76.9%</b>	<b>83.3%</b>	<b>85.7%</b>	<b>84.6%</b>	<b>70.0%</b>	<b>60.0%</b>	<b>76.9%</b>	<b>86.7%</b>	<b>57.9%</b>	<b>82.4%</b>	<b>82.6%</b>		<b>76.8%</b>
<b>STATE TOTAL</b>	<b>82.1%</b>	<b>81.0%</b>	<b>73.8%</b>	<b>83.6%</b>	<b>80.0%</b>	<b>76.2%</b>	<b>79.6%</b>	<b>91.8%</b>	<b>66.7%</b>	<b>75.0%</b>	<b>81.8%</b>		<b>79.4%</b>