



Michelle Lujan Grisham, Governor
Kari Armijo, Secretary
Alex Castillo Smith, Deputy Secretary
Kathy Slater Huff, Deputy Secretary
Kyra Ochoa, Deputy Secretary
Dana Flannery, Medicaid Director
Nikki Kozlowski, Income Support Director

General Information Memorandum

ISD-GI 25-07

TO: ISD Employees
FROM: Niki Kozlowski, Director, Income Support Division
DATE: February 6, 2025
RE: FFY 2024 SNAP Performance Report- Final

Attached please find the final issue of the Supplemental Nutrition Assistance Program (SNAP) Performance Report for FFY 2024. This report includes all Quality Control (QC) findings received for the review months of October 2023 - September 2024.

The FFY 2024 Performance Goals are:

- Cumulative Payment Error Rate of 6% or better (Payment Accuracy 94%)
- Cumulative Negative Error Rate of 1% (Case and Procedural Error Rate (CAPER) of 99%)
- Expedite and Non-Expedite application processing timeliness of 95%

If there are any questions or comments, please contact Marcos Rivera of the Quality Assessment Bureau, e-mail at HCA.QIS@hca.nm.gov.

Attachment: Final SNAP Performance Report for FFY 2024



SEPTEMBER 2024
PERFORMANCE REPORT-
FINAL EDITION_

Final Edition

Federal Fiscal Year 2024

Quality Control Review Findings
October 2023 - September 2024

Issued by:
Quality Improvement Section
Quality Assessment Bureau, New Mexico Human Services Department

Table of Contents

SNAP Performance Report	2
SNAP Performance Report – Final Edition	2
State Performance Goals	2
Payment Accuracy	3
State Cumulative Payment Error Rate	3
State Payment Error Rates	4
Are they Agency or Recipient Errors?	4
SNAP Error Trends – Cumulative Totals	5
SNAP Payment Error Rates	6
SNAP Payment Error Rates Mitigation Strategies	7
CAPER	8
State Cumulative Negative Error Rate	8
Top Error Trends in CAPER Reviews	9
CAPER Errors – Cumulative Totals	11
CAPER Error Rates	12
Regression Rates	13
Payment Error Rate	13
CAPER Error Rate	13

SNAP Performance Report

SNAP Performance Report: Final Edition




This Supplemental Nutrition Assistance Program (SNAP) Performance Report for Federal Fiscal Year (FFY) 2024 includes all Quality Control (QC) findings received for the review months of **October 2023 – September 2024**. A new edition is published monthly; this is the Final Edition for FFY 2024.

State Performance Goals

The State reports on three areas and is evaluated by the United States Department of Agriculture (USDA) Food and Nutrition Service (FNS) on these areas:

- **Payment Accuracy**
- **Case and Procedural Error Rate (CAPER)**
- **SNAP Timeliness for Expedite and Non-Expedite**

For FFY 2024, the State Performance Goals are as follows:

<u>Payment Accuracy</u>	<u>CAPER</u>	<u>SNAP Timeliness</u>
		
A cumulative error rate of 6% or better, for a payment accuracy of 94% or better.	A cumulative negative error rate of 1% or better, for a CAPER accuracy of 99% or better.	A timeliness rate of 95% or better for SNAP Expedite and Non-Expedite.

The Payment Error Rate is calculated from the QC Positive Sample cases for the review month, which are the cases actively receiving SNAP benefits. QC reviews the last action taken on the case to certify the eligibility, which could be an Application, Interim Report, or Recertification.

The CAPER Error Rate is calculated from the QC Negative Sample cases for the review month, which are SNAP cases that were denied or terminated during the review month. QC reviews the last action taken to deny/terminate eligibility. The CAPER rate reviews the caseworker action and notices sent to the household. If a notice is not clear and concise and/or does not match the case record, the case is found in error even if the action to deny the case was correct.

Payment Accuracy

State Cumulative Payment Error Rate

The cumulative rates are the ongoing totals and averages taken from the total QC reviews for the fiscal year. These totals contain reviews from the month of **September 2024**.

Ineligible Benefits

\$2,985 (0.82%) in benefits were incorrectly issued to recipients who were not eligible to receive SNAP benefits.

Total Error Amount

\$52,721 in benefits were incorrectly issued to recipients and is a combination of overpaid, underpaid, and ineligible benefits. This is based on the total cases reviewed by QC and the \$364,521 total benefits issued within those cases.

14.46%
Payment
Error Rate

Underpaid Benefits

\$5,490.00 (1.51%) in benefits were not appropriately issued to recipients who were eligible to receive a higher amount in SNAP benefits.

Overpaid Benefits

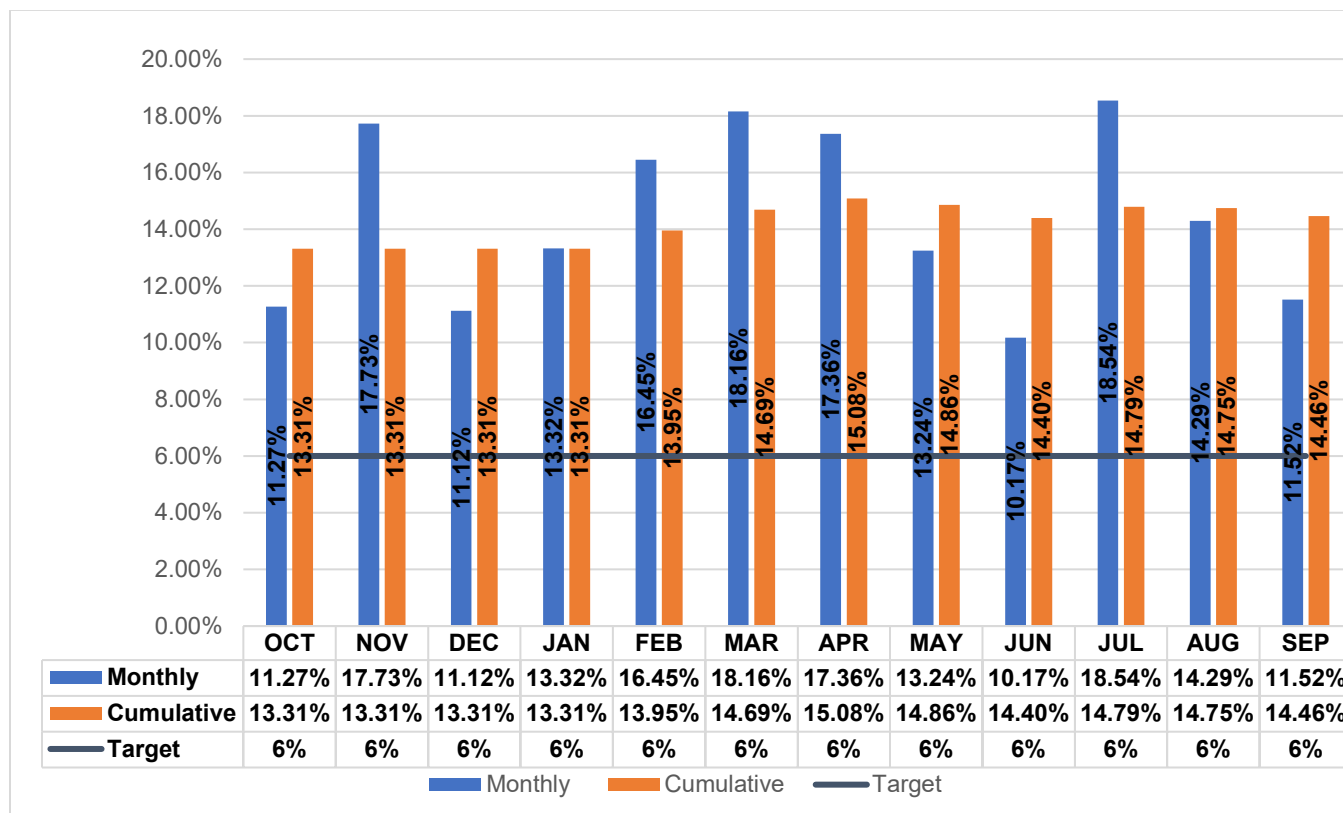
\$44,246.00 (12.14%) in benefits were incorrectly issued to recipients who were eligible for a lesser amount in SNAP benefits.

Cumulative Totals - September 2024

Total Benefits Paid in QC Sample	\$364,521
Total Error Amount in QC Sample	\$52,721
Total Cases Reviewed by QC	1054
Total Cases with Errors	210
Total Correct Cases	844
Total Cases with Overpaid Benefits	169
Total Cases with Underpaid Benefits	32
Total Cases with Ineligible Benefits	9
Cases Dropped (In Sample, not Reviewed by QC)	122

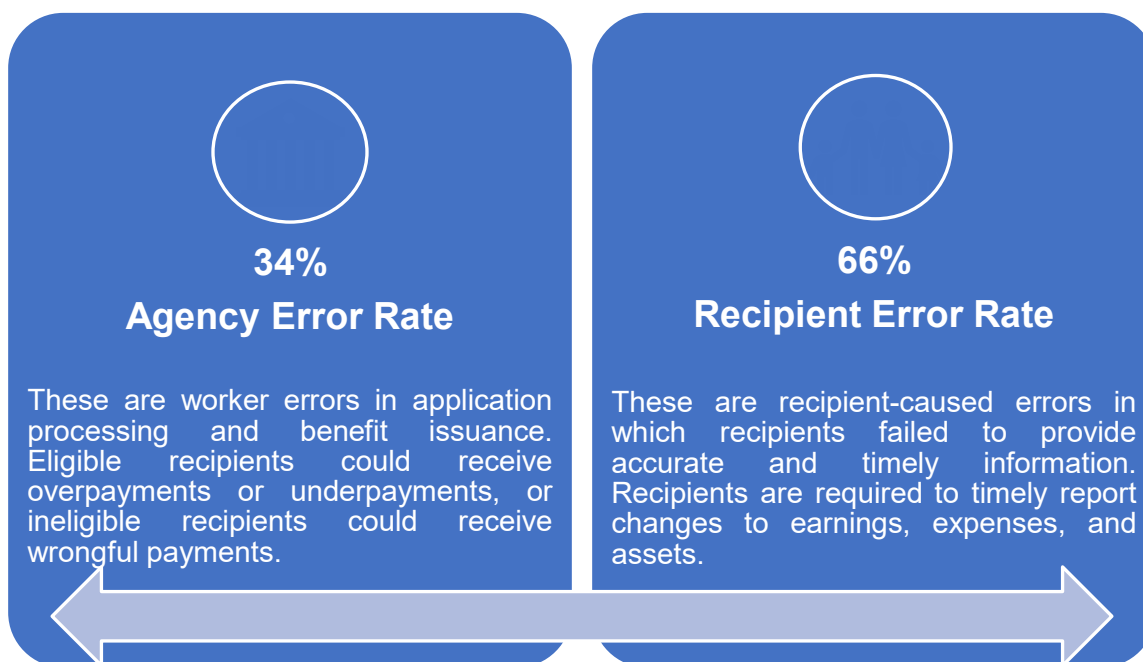
FFY 2024 State Payment Error Rates

Monthly vs. Cumulative Error Rates



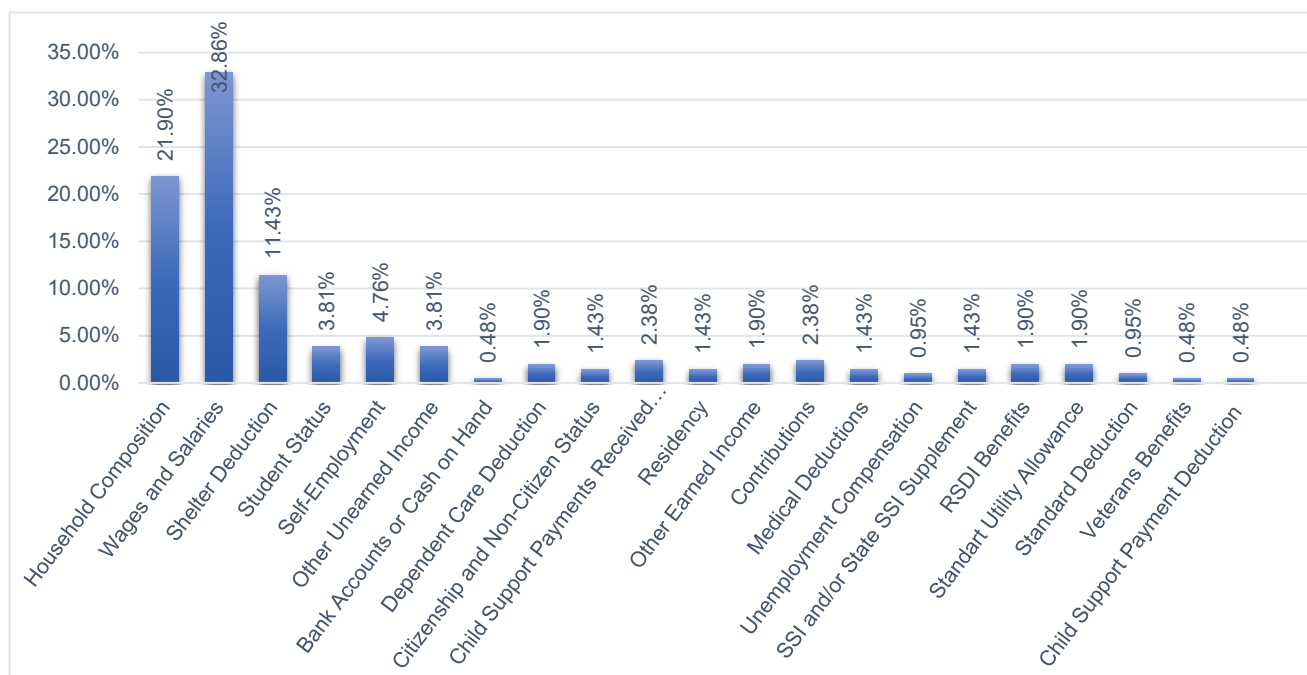
Monthly totals are for the individual review month, cumulative totals are the totals of all months added together.

Are they Agency or Recipient Errors?



FFY 2024 SNAP Error Trends – Cumulative Totals

Cumulative Totals – September 2024		
Error Element	Error Amount	Error Percentage
Household Composition	\$18,606	21.90%
Wages and Salaries	\$18,526	32.86%
Shelter Deduction	\$2,977	11.43%
Student Status	\$2,211	3.81%
Self-Employment	\$1,594	4.76%
Other Unearned Income	\$1,352	3.81%
Bank Accounts or Cash on Hand	\$1,083	0.48%
Dependent Care Deduction	\$767	1.90%
Citizenship and Non-Citizen Status	\$736	1.43%
Child Support Payments Received from Absent Parent	\$645	2.38%
Residency	\$631	1.43%
Other Earned Income	\$605	1.90%
Contributions	\$573	2.38%
Medical Deductions	\$467	1.43%
Unemployment Compensation	\$455	0.95%
SSI and or State SSI Supplement	\$454	1.43%
RSDI Benefits	\$384	1.90%
Standard Utility Allowance	\$365	1.90%
Standard Deduction	\$133	0.95%
Veteran Benefits	\$81	0.48%
Child Support Payment Deduction	\$76	0.48%



FFY 2024 SNAP Payment Error Rates

Regional and County Breakdowns

Percentages are on based total amount of benefits in error divided by the total of benefits issued in the QC sample.

		OCT	NOV	DEC	JAN	FEB	MAR	APR	MAY	JUN	JUL	AUG	SEP	TOTAL AVG.
Region 1 Northwest Region	Cibola	0.00%	0.00%	0.00%	0.00%	100.0%	0.00%	0.00%	0.00%	0.00%	0.00%	0.00%	4.89%	13.34%
	McKinley	12.66%	0.00%	6.14%	13.57%	38.48%	18.22%	0.00%	0.00%	0.00%	0.00%	36.73%	17.42%	11.92%
	San Juan	0.00%	5.10%	7.29%	18.73%	30.37%	0.00%	80.40%	40.91%	5.08%	0.00%	0.00%	5.58%	16.73%
	Sierra	0.00%	0.00%	11.25%	0.00%	108.84%	6.35%	18.53%	0.00%	21.59%	0.00%	0.00%	0.00%	19.84%
	Socorro	14.71%	0.00%	0.00%	85.16%	0.00%	0.00%	0.00%	0.00%	0.00%	0.00%	0.00%	0.00%	6.37%
	N. Valencia	37.13%	9.04%	0.00%	0.00%	27.38%	71.26%	0.00%	0.00%	0.00%	64.70%	0.00%	0.00%	18.25%
	S. Valencia	16.67%	0.00%	0.00%	0.00%	0.00%	0.00%	0.00%	0.00%	0.00%	0.00%	0.00%	0.00%	16.67%
Region 1 Totals		11.62%	4.83%	4.85%	10.23%	41.31%	27.05%	15.00%	22.72%	5.68%	22.47%	8.57%	9.94%	15.34%
Region 2 Northeast Region	Colfax	0.00%	0.00%	0.00%	0.00%	0.00%	0.00%	0.00%	0.00%	0.00%	0.00%	0.00%	0.00%	0.00%
	Guadalupe	0.00%	0.00%	0.00%	0.00%	0.00%	0.00%	0.00%	0.00%	0.00%	0.00%	0.00%	0.00%	0.00%
	Quay	0.00%	0.00%	0.00%	0.00%	0.00%	0.00%	0.00%	0.00%	0.00%	0.00%	25.75%	53.34%	19.38%
	Rio Arriba	0.00%	90.95%	21.33%	0.00%	58.76%	6.33%	0.00%	0.00%	19.86%	38.38%	32.08%	0.00%	20.96%
	San Miguel	0.00%	0.00%	0.00%	0.00%	0.00%	0.00%	37.02%	0.00%	14.24%	0.00%	22.48%	0.00%	6.50%
	Sandoval	23.88%	10.21%	0.00%	28.62%	0.00%	0.00%	44.91%	0.00%	0.00%	5.41%	20.24%	58.80%	16.24%
	Santa Fe	0.00%	0.00%	47.59%	40.52%	0.00%	56.28%	14.83%	0.00%	34.46%	33.45%	35.34%	27.85%	29.31%
	Taos	38.13%	7.87%	51.52%	0.00%	0.00%	0.00%	0.00%	0.00%	0.00%	32.81%	40.99%	76.78%	27.75%
Region 2 Totals		16.81%	20.80%	21.54%	24.69%	7.13%	19.21%	29.44%	0.00%	13.32%	20.10%	27.61%	34.41%	19.86%
Region 3 Central Region	NE Bernalillo	0.00%	9.42%	0.00%	0.00%	10.65%	5.29%	30.84%	30.31%	18.46%	11.88%	7.50%	9.29%	10.01%
	NW Bernalillo	27.78%	53.87%	0.00%	4.74%	0.00%	0.00%	3.86%	50.17%	7.78%	32.04%	0.00%	12.27%	19.65%
	SE Bernalillo	0.00%	0.00%	38.94%	0.00%	0.00%	35.66%	0.00%	0.00%	30.59%	30.01%	0.00%	17.72%	16.18%
	SW Bernalillo	12.34%	0.00%	3.44%	18.52%	9.00%	29.42%	13.48%	16.43%	0.00%	32.17%	16.04%	5.29%	16.31%
	Torrance	0.00%	0.00%	0.00%	0.00%	0.00%	100.0%	0.00%	0.00%	35.40%	60.21%	0.00%	0.00%	34.57%
Region 3 Totals		7.11%	28.63%	3.94%	9.87%	6.19%	21.41%	11.30%	29.84%	14.52%	27.93%	8.64%	10.60%	15.09%
Region 4 Southeast Region	Chaves	0.00%	0.00%	12.44%	32.45%	0.00%	14.07%	23.30%	0.00%	7.56%	0.00%	0.00%	15.00%	8.26%%
	Curry	0.00%	0.00%	8.96%	0.00%	0.00%	0.00%	0.00%	0.00%	0.00%	0.00%	0.00%	0.00%	1.49%%
	Artesia	0.00%	0.00%	0.00%	0.00%	0.00%	0.00%	0.00%	0.00%	0.00%	0.00%	0.00%	0.00%	0.00%
	Carlsbad	0.00%	0.00%	0.00%	0.00%	0.00%	0.00%	0.00%	0.00%	5.12%	0.00%	0.00%	0.00%	1.63%
	Lea	46.55%	42.46%	0.00%	0.00%	0.00%	0.00%	0.00%	0.00%	0.00%	50.84%	5.76%	5.73%	16.05%
	Lincoln	0.00%	0.00%	92.10%	0.00%	0.00%	0.00%	0.00%	0.00%	0.00%	0.00%	0.00%	0.00%	12.30%
	Roosevelt	0.00%	0.00%	0.00%	0.00%	0.00%	0.00%	0.00%	0.00%	0.00%	0.00%	0.00%	0.00%	0.00%
Region 4 Totals		10.41%	18.85%	12.37%	6.60%	0.00%	4.26%	11.57%	0.00%	3.70%	17.54%	4.81%	8.75%	8.64%
Region 5 Southwest Region	E. Dona Ana	0.00%	9.90%	27.15%	0.00%	58.48%	0.00%	11.15%	0.00%	0.00%	0.00%	69.45%	0.00%	16.69%
	Grant	4.19%	0.00%	0.00%	0.00%	0.00%	0.00%	0.00%	0.00%	0.00%	0.00%	0.00%	0.00%	1.13%
	Luna	0.00%	0.00%	0.00%	0.00%	0.00%	0.00%	58.42%	0.00%	66.12%	0.00%	0.00%	4.06%	16.75%
	Otero	19.86%	85.35%	0.00%	43.62%	0.00%	0.00%	0.00%	0.00%	0.00%	0.00%	0.00%	0.00%	7.87%
	S. Dona Ana	33.56%	0.00%	72.59%	8.32%	0.00%	8.05%	50.00%	0.00%	0.00%	0.00%	0.00%	0.00%	10.51%
	W. Dona Ana	7.95%	13.03%	4.28%	0.00%	28.42%	13.54%	7.31%	27.98%	0.00%	7.81%	92.68%	0.00%	13.96%
Region 5 Totals		12.63%	11.18%	18.42%	16.64%	19.18%	5.84%	22.47%	7.82%	14.01%	3.25%	37.31%	0.87%	12.23%
State Totals		11.27%	17.73%	11.12%	13.32%	16.45%	18.16%	17.36%	13.24%	10.17%	18.54%	14.29%	11.52%	14.46%

SNAP Payment Error Rates Mitigation Strategies

Identified reasons for cases found in error during the month of September:

- Reported Information disregarded or not applied.
- Client failed to report required information.
- Agency failed to follow up on inconsistent or incomplete information.

Description of activity developed to resolve deficiencies:

Quality Control reviews are referred to the offices where the error was made for review by the worker and their direct supervisor. County Director written responses are required within ten days of the issuance of the QC finding.

Committees and work groups are developed as needed in review of common error trends and system development or error. These teams consist of County Directors and Line Managers from ISD Regions and the Field Support Bureau, representatives from the ASPEN Help Desk, Policy & Program Development Bureau, Quality Assessment Bureau, and the Training Support Bureau. Staff identify the reason for the error and steps to prevent recurring errors and submit inquiries for policy and procedure clarifications.

Presentations are developed targeting areas identified and are discussed at bi-monthly staff meetings with local Workload teams.

Review processes and findings procedures are reviewed and updated consistently to incorporate FNS findings and observations from QC Reviews, Timeliness Technical Assistance Reviews, State Systems Reviews, Payment Accuracy Reviews etc. as well as any new or adjusted legislation, policy, standards or consent decrees as needed or available.

FFY 2024 Case and Procedural Error Rate (CAPER)

State Cumulative Negative Error Rate

Invalid Closure Breakdown

Out of the 437 invalid denials/closures identified, 128 were identified as an incorrect closure, and 309 were identified as incorrect denials.

Negative Error Amount

437 cases out of 894 were found to have been denied or closed incorrectly. These cases were found to have errors with denial/closure reasons, timeliness, and/or notices.

48.88%
CAPER
Error Rate

Incorrect Notices

5.49% of the incorrect negative actions reported were due to unclear or incorrect notices issued.

Incorrect Denials

94.51% of the incorrect negative actions reported were due to incorrect denial/closure reasons and/or untimely denials/closures.

Cumulative Totals – September 2024

Total Cases in Sample Pulled for Review	894
Cases Dropped (Sampled not Reviewed by QC)	86
Total Cases Reviewed	808
Total Valid Cases	457
Total Invalid Cases	437

FFY 2024 Top Error Trends in CAPER Reviews

Cumulative Totals from CAPER Reviews: September 2024

Reason for the Error	When the Errors Occurred		Total Errors	Percent of Cases with Error
	Denials	Terminations		
Rank #1: Application				
Late denial agency failed to process the application timely	214	60	274	63.43%
Failed to process the reapplication timely (recertification application)	0	14	14	3.24%
Policy incorrectly applied- no other codes applicable	2	1	3	0.69%
Improper denial for missing interview when never scheduled	1	1	2	0.46%
Failed to issue a required Notice of Missed Interview (NOMI)	2	0	2	0.46%
Denial before the 30 th day	0	1	1	0.23%
Total	219	77	296	68.52%
Rank #2: Notices				
Notice not clearly understandable	10	3	13	3.01%
Policy incorrectly applied- no other codes applicable	10	2	12	2.78%
Notice was sent to wrong address	0	3	3	0.69%
Notice reason does not match reason for action	1	0	1	0.23%
Notice was not complete	1	0	1	0.23%
Failed to send notice of action	1	0	1	0.23%
Notice did not include date of intended action	1	0	1	0.23%
Total	24	8	32	7.41%
Rank #3: Action Type				
Policy incorrectly applied-no other codes applicable	12	10	22	5.09%
Improper suspension when the case should have been denied or terminated	1	1	2	0.46%
Improper termination or suspension for failure to meet reporting requirements	0	1	1	0.23%
Total	13	12	25	5.79%
Rank #4: Wages and Salaries				
Improper income calculation	5	1	6	1.39%
Policy incorrectly applied-no other codes applicable	3	2	5	1.16%
Agency failed to follow up on known and reported impending changes	5	0	5	1.16%
Failed to consider or incorrectly considered reported information	2	2	4	0.93%
Agency failed to follow up on inconsistent or incomplete information	2	0	2	0.46%
Income from known/processed source included that should not have been	1	0	1	0.23%
Failed to consider/anticipate month with extra pay date	1	0	1	0.23%
Total	19	5	24	5.56%
Rank #5: Arithmetic Computation				
Benefit/allotment/eligibility incorrectly computed	16	0	16	3.70%
Policy incorrectly applied- no other codes applicable	2	0	2	0.46%

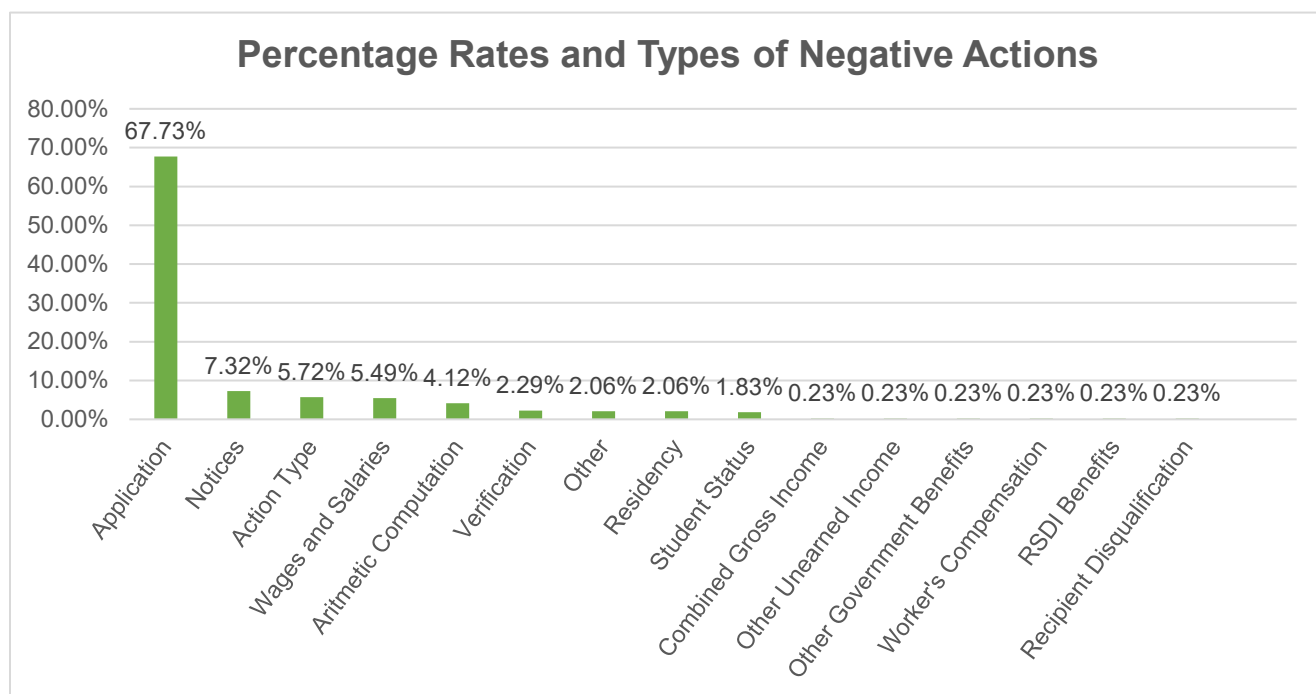


Total	18	0	18	4.28%
Rank #6: Verification				
Improper Denial/Termination-failure to provide-verification was received or is in case file	0	3	3	0.69%
Policy incorrectly applied- no other codes applicable	0	3	3	0.69%
Agency failed to follow up on known and reported impending changes	0	2	2	0.46%
Verification was in case file	0	1	1	0.23%
Improper denial prior to end of timeframe for providing verification	0	1	1	0.23%
Total	0	10	10	2.31%
Rank #7: Other				
Policy incorrectly applied- no other codes applicable	4	2	6	1.39%
Other	1	1	2	0.46%
Failure to provide verification for a period of time not associated with current application	0	1	1	0.23%
Total	5	4	9	2.08%
Rank #8: Residency				
Policy incorrectly applied- no other codes applicable	0	5	5	1.16%
Agency failed to follow up on inconsistent or incomplete information	0	2	2	0.46%
Improper denial or termination, not out of the project area	1	0	1	0.23%
Improper denial-Homeless household denied for failing to provide address	0	1	1	0.23%
Total	1	8	9	2.08%
Rank #9: Student Status				
Agency failed to follow up on inconsistent or incomplete information	4	1	5	1.16%
Failed to consider or incorrectly considered Eligible Student status	1	0	1	0.23%
Policy incorrectly applied- no other codes applicable	1	0	1	0.23%
Eligible person(s) excluded	1	0	1	0.23%
Total	7	1	8	1.85%
Rank #10: Combined Gross Income				
Policy incorrectly applied – no other codes applicable	1	0	1	0.23%
Total	1	0	1	0.23%

FFY 2024 CAPER Errors – Cumulative Totals

Percentage Rates and Types of Negative Actions: September 2024

Error	Denials		Closures		Total Invalid	Percentage Total
Application	219	50.11%	77	17.62%	296	67.73%
Notices	24	5.49%	8	1.83%	32	7.32%
Action Type	13	2.97%	12	2.75%	25	5.72%
Wages and Salaries	19	4.35%	5	1.14%	14	5.49%
Arithmetic Computation	18	4.12%	0	0.00%	18	4.12%
Verification	0	0.00%	10	2.29%	10	2.29%
Other	5	1.14%	4	0.92%	9	2.06%
Residency	1	0.23%	8	1.83%	9	2.06%
Student Status	7	1.60%	1	0.23%	8	1.83%
Combined Gross Income	1	0.23%	0	0.00%	1	0.23%
Other Unearned Income	1	0.23%	0	0.00%	1	0.23%
Other Government Benefits	0	0.00%	1	0.23%	1	0.23%
Worker's Compensation	0	0.00%	1	0.23%	1	0.23%
RSDI Benefits	1	0.23%	0	0.00%	1	0.23%
Recipient Disqualification	0	0.00%	1	0.23%	1	0.23%
TOTAL	309	70.71%	128	29.29%	437	100.00%



FFY 2024 CAPER Error Rates

Regional and County Breakdowns

		OCT	NOV	DEC	JAN	FEB	MAR	APR	MAY	JUN	JUL	AUG	SEP	TOTAL AVG.
Region 1 Northwest Region	Cibola	100.0%	100.0%	0.00%	100.0%	50.00%	100.0%	0.00%	0.00%	0.00%	0.00	0.00%	0.00%	50.00%
	McKinley	33.33%	100.0%	100.0%	100.0%	60.00%	0.00%	0.00%	100.0%	0.00%	100.0%	0.00%	16.67%	46.67%
	San Juan	25.00%	50.00%	100.0%	100.0%	66.67%	100.0%	80.40%	50.00%	80.00%	16.67%	75.00%	25.00%	60.47%
	Sierra	0.00%	0.00%	100.0%	0.00%	0.00%	100.0%	18.53%	0.00%	0.00%	0.00%	33.33%	0.00%	50.00%
	Socorro	0.00%	100.0%	100.0%	0.00%	0.00%	100.0%	0.00%	0.00%	100.0%	0.00%	0.00%	33.33%	70.00%
	N. Valencia	50.00%	0.00%	0.00%	50.00%	100.0%	0.00%	0.00%	0.00%	100.0%	0.00%	50.00%	50.00%	40.91%
	S. Valencia	0.00%	0.00%	0.00%	0.00%	50.00%	0.00%	0.00%	0.00%	0.00%	0.00%	0.00%	0.00%	33.33%
Region 1 Totals		41.67%	57.14%	100.0%	83.33%	57.14%	100.0%	15.00%	28.57%	72.73%	27.27%	29.41%	15.38%	51.91%
Region 2 Northeast Region	Colfax	0.00%	0.00%	0.00%	0.00%	100.0%	100.0%	0.00%	0.00%	0.00%	100.0%	0.00%	0.00%	50.00%
	Guadalupe	0.00%	0.00%	100.0%	0.00%	0.00%	0.00%	0.00%	0.00%	100.0%	0.00%	0.00%	0.00%	75.00%
	Quay	100.0%	0.00%	100.0%	0.00%	0.00%	0.00%	0.00%	100.0%	0.00%	0.00%	0.00%	0.00%	80.0%
	Rio Arriba	0.00%	100.00%	100.0%	0.00%	0.00%	100.0%	0.00%	25.00%	0.00%	66.67%	33.33%	0.00%	42.86%
	San Miguel	0.00%	0.00%	100.0%	66.67%	66.67%	100.0%	37.02%	50.00%	100.0%	0.00%	0.00%	0.00%	52.94%
	Sandoval	40.00%	0.00%	50.00%	66.67%	80.00%	83.33%	44.91%	66.67%	100.0%	25.00%	0.00%	33.33%	57.78%
	Santa Fe	0.00%	0.00%	50.00%	66.67%	100.0%	50.00%	14.83%	0.00%	66.67%	42.86%	40.00%	0.00%	38.89%
	Taos	0.00%	0.00%	100.0%	0.00%	0.00%	100.0%	0.00%	50.00%	0.00%	0.00%	0.00%	0.00%	30.00%
Region 2 Totals		27.27%	16.67%	71.43%	50.00%	72.73%	85.71%	29.44%	41.18%	85.71%	46.67%	23.08%	16.67%	49.31%
Region 3 Central Region	NE Bernalillo	37.50%	75.00%	85.71%	57.14%	80.00%	77.78%	30.84%	33.33%	71.43%	20.00%	0.00%	0.00%	54.12%
	NW Bernalillo	50.00%	75.00%	100.0%	83.33%	100.0%	85.71%	3.86%	20.00%	100.0%	50.00%	0.00%	66.67%	63.93%
	SE Bernalillo	50.00%	66.67%	0.00%	50.00%	50.00%	33.33%	0.00%	50.00%	80.00%	33.33%	33.33%	0.00%	53.85%
	SW Bernalillo	100.0%	62.50%	100.0%	70.00%	80.0%	66.67%	13.48%	50.00%	37.50%	30.00%	0.00%	0.00%	52.24%
	Torrance	0.00%	0.00%	100.0%	0.00%	0.00%	0.00%	0.00%	0.00%	100.0%	0.00%	0.00%	0.00%	50.00%
Region 3 Totals		50.00%	67.74%	95.24%	68.00%	81.82%	72.73%	11.30%	35.29%	65.22%	28.57%	6.67%	13.33%	55.81%
Region 4 Southeast Region	Chaves	100.0%	0.00%	100.0%	0.00%	100.0%	100.0%	23.20%	66.67%	0.00%	50.00%	0.00%	0.00%	39.29%
	Curry	100.0%	25.00%	75.00%	100.0%	0.00%	100.0%	0.00%	100.0%	100.0%	100.0%	0.00%	0.00%	57.69%
	Artesia	0.00%	0.00%	100.0%	0.00%	0.00%	0.00%	0.00%	0.00%	0.00%	0.00%	0.00%	0.00%	100.00%
	Carlsbad	0.00%	50.00%	0.00%	100.0%	0.00%	0.00%	0.00%	50.00%	0.00%	0.00%	0.00%	0.00%	58.33%
	Lea	0.00%	100.0%	100.0%	75.00%	75.00%	100.0%	0.00%	75.00%	75.00%	0.00%	0.00%	0.00%	68.97%
	Lincoln	66.67%	100.0%	100.0%	0.00%	50.00%	100.0%	0.00%	50.00%	0.00%	0.00%	0.00%	0.00%	61.54%
	Roosevelt	0.00%	0.00%	0.00%	0.00%	100.0%	0.00%	0.00%	0.00%	0.00%	0.00%	0.00%	0.00%	100.00%
Region 4 Totals		77.78%	45.45%	90.91%	88.89%	66.67%	100.0%	11.57%	66.67%	44.44%	50.00%	0.00%	0.00%	58.46%
Region 5 Southwest Region	E. Dona Ana	100.0%	50.00%	100.0%	100.0%	0.00%	100.0%	11.15%	66.67%	66.67%	66.67%	100.0%	20.00%	75.76%
	Grant	50.00%	0.00%	100.0%	0.00%	100.0%	100.0%	0.00%	0.00%	0.00%	0.00%	0.00%	0.00%	26.67%
	Luna	100.0%	50.00%	100.0%	0.00%	75.00%	0.00%	58.42%	50.00%	100.0%	0.00%	66.67%	0.00%	61.11%
	Otero	0.00%	0.00%	0.00%	50.00%	0.00%	100.0%	0.00%	20.00%	0.00%	100.0%	50.00%	0.00%	38.10%
	S. Dona Ana	100.0%	100.0%	100.0%	50.00%	50.00%	100.0%	50.00%	0.00%	60.00%	0.00%	0.00%	16.67%	58.62%
	W. Dona Ana	20.00%	83.33%	75.00%	75.00%	100.0%	66.67%	7.31%	0.00%	71.43%	0.00%	0.00%	20.00%	52.27%
Region 5 Totals		53.85%	57.14%	86.67%	64.71%	77.78%	84.62%	22.47%	28.57%	64.71%	50.00%	26.67%	15.79%	55.00%
State Totals		50.11%	56.52%	88.41%	68.12%	72.73%	83.87%	17.36%	39.71%	65.67%	37.29%	18.84%	15.07%	54.08%

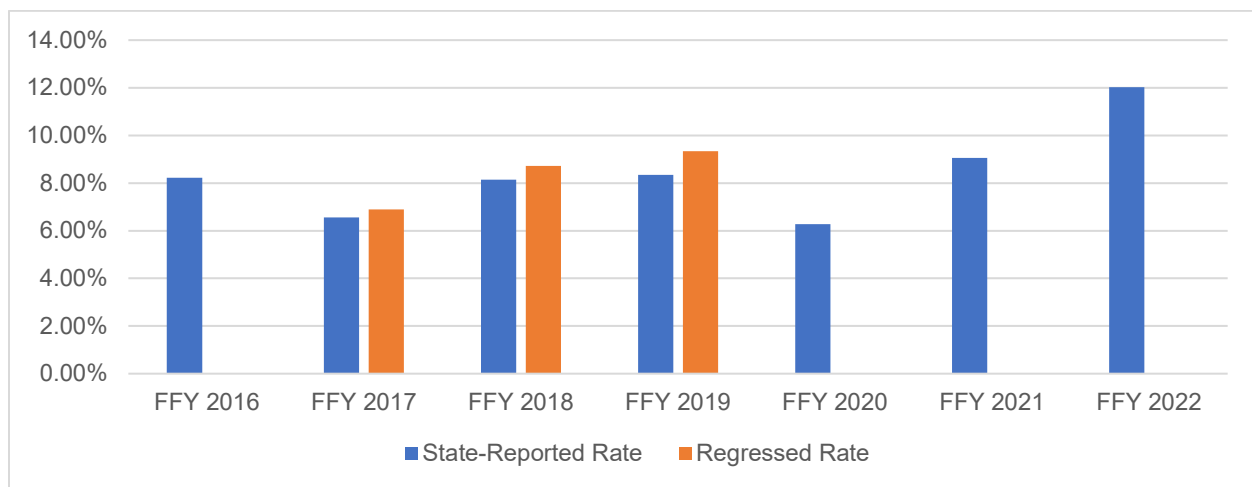
FFY 2024 Regression Rates

Regression rates are calculated by FNS and depend on such variables as FNS reviews of QC-reviewed cases and the State's caseload size. The following charts give the State-reported error rates and the regression rates for Payment Accuracy and CAPER.

*****Please note that regression rates were not issued for FFY 2016 and FFY 2020. A CAPER regression rate for FFY 2019 and FFY 2020 was not issued. FFY 2021, FFY 2022, FFY 2023 and current data for FFY 2024 have not been issued at the time of this report.**

Payment Error Rate

Current Fiscal Year and Previous Fiscal Years



CAPER Error Rate

Current Fiscal Year and Previous Fiscal Years

