



HEALTH CARE
A U T H O R I T Y

Michelle Lujan Grisham, Governor
Kari Armijo, Secretary
Alex Castillo Smith, Deputy Secretary
Kathy Slater Huff, Deputy Secretary
Niki Kozlowski, Acting Deputy Secretary
Alanna Dancis, Acting Medicaid Director

General Information Memorandum

ISD GI 26-09

TO: ISD Employees

FROM: Niki Kozlowski, Acting Deputy Secretary, Health Care Authority

DATE: 02/9/2026

RE: FFY 2025 SNAP Performance Report – Final Edition

Attached is the **Final Edition of the Supplemental Nutrition Assistance Program (SNAP) Performance Report for FFY 2025**. This report includes all Quality Control (QC) findings received for the review year of FY 2025.

The FFY 2025 Performance Goals are as follows:

- Cumulative Payment Error Rate of 6% or better (Payment Accuracy of 94%)
- Cumulative Negative Error Rate of 1% (Case and Procedural Error Rate [CAPER] of 99%)
- Expedite and Non-Expedite application processing timeliness of 95%

If you have any questions or comments regarding this report, please contact Marcos Rivera of the Quality Assessment Bureau via email at HCA.QIS@hca.nm.gov.

Attachment: First Edition SNAP Performance Report for FFY 2025



HEALTH CARE
AUTHORITY

SEPTEMBER 2025 PERFORMANCE REPORT

Final Edition

Federal Fiscal Year 2025

Quality Control Review Findings
October 2024 – September 2025

Issued by:
Quality Improvement Section
Quality Assessment Bureau, New Mexico Healthcare Authority

Table of Contents

Contents

SNAP PERFORMANCE REPORT	2
STATE PERFORMANCE GOALS.....	2
PAYMENT ACCURACY.....	3
STATE CUMULATIVE PAYMENT ERROR RATE.....	3
FFY 2025 STATE PAYMENT ERROR RATES	4
CUMULATIVE ERROR BREAKDOWN-ARE THEY AGENCY OR RECIPIENT ERRORS?	4
FFY 2025 SNAP ERROR TRENDS – CUMULATIVE TOTALS.....	5
FFY 2025 SNAP PAYMENT ERROR RATES.....	6
SNAP PAYMENT ERROR RATES MITIGATION STRATEGIES	7
FFY 2025 CASE AND PROCEDURAL ERROR RATE (CAPER)	8
STATE CUMULATIVE NEGATIVE ERROR RATE.....	8
FFY 2025 TOP ERROR TRENDS IN CAPER REVIEWS.....	9
FFY 2025 CAPER ERRORS – CUMULATIVE TOTALS.....	10
FFY 2025 CAPER ERROR RATES	12
FFY 2025 REGRESSION RATES.....	13
PAYMENT ERROR RATE	13
CAPER ERROR RATE	13

SNAP Performance Report

SNAP Performance Report: Eleventh Edition




This Supplemental Nutrition Assistance Program (SNAP) Performance Report for Federal Fiscal Year (FFY) 2025 includes all Quality Control (QC) findings received for the review months of **October 2024 – September 2025**. A new edition is published monthly; this is the Final Edition for FFY 2025.

State Performance Goals

The State reports on three areas and is evaluated by the United States Department of Agriculture (USDA) Food and Nutrition Service (FNS) on these areas:

- **Payment Accuracy**
- **Case and Procedural Error Rate (CAPER)**
- **SNAP Timeliness for Expedite and Non-Expedite**

For FFY 2025, the State Performance Goals are as follows:

<u>Payment Accuracy</u>	<u>CAPER</u>	<u>SNAP Timeliness</u>
		
A cumulative error rate of 6% or better, for a payment accuracy of 94% or better.	A cumulative negative error rate of 1% or better, for a CAPER accuracy of 99% or better.	A timeliness rate of 95% or better for SNAP Expedite and Non-Expedite.

The Payment Error Rate is calculated from the QC Positive Sample cases for the review month, which are the cases actively receiving SNAP benefits. QC reviews the last action taken on the case to certify the eligibility, which could be an Application, Interim Report, or Recertification.

The CAPER Error Rate is calculated from the QC Negative Sample cases for the review month, which are SNAP cases that were denied or terminated during the review month. QC reviews the last action taken to deny/terminate eligibility. The CAPER rate reviews the caseworker action and notices sent to the household. If a notice is not clear and concise and/or does not match the case record, the case is found in error even if the action to deny the case was correct.

Payment Accuracy

State Cumulative Payment Error Rate

The cumulative rates are the ongoing totals and averages taken from the total QC reviews for the fiscal year. These totals contain reviews from the months of **October 2024- September 2025**

Ineligible Benefits

\$3,086 (.89%) in benefits were incorrectly issued to recipients who were not eligible to receive SNAP benefits.

Total Error Amount

\$57,667 in benefits were incorrectly issued to recipients and is a combination of overpaid, underpaid, and ineligible benefits. This is based on the total cases reviewed by QC and the \$263,936 total benefits issued within those cases.

16.62%

Payment
Error Rate

Underpaid Benefits

\$3,598 (1.04%) in benefits were not appropriately issued to recipients who were eligible to receive a higher amount in SNAP benefits.

Overpaid Benefits

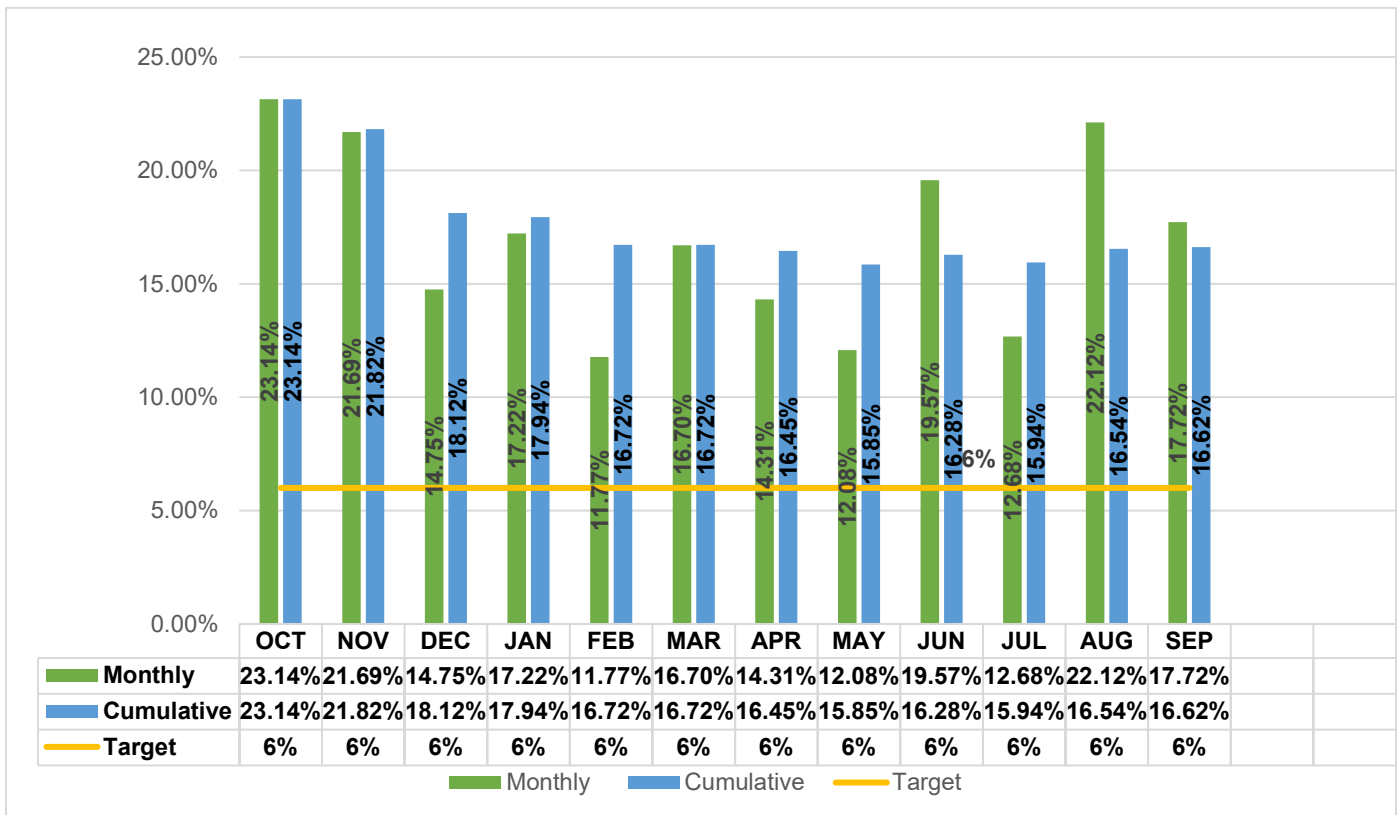
\$50,983 (14.69%) in benefits were incorrectly issued to recipients who were eligible for a lesser amount in SNAP benefits.

Cumulative Totals – October 2024-August 2025

Total Benefits Paid in QC Sample	\$349,964
Total Error Amount in QC Sample	\$57,348
Total Cases Reviewed by QC	1,016
Total Cases with Errors	224
Total Correct Cases	792
Total Cases with Overpaid Benefits	188
Total Cases with Underpaid Benefits	26
Total Cases with Ineligible Benefits	10
Cases Dropped (In Sample, not Reviewed by QC)	63

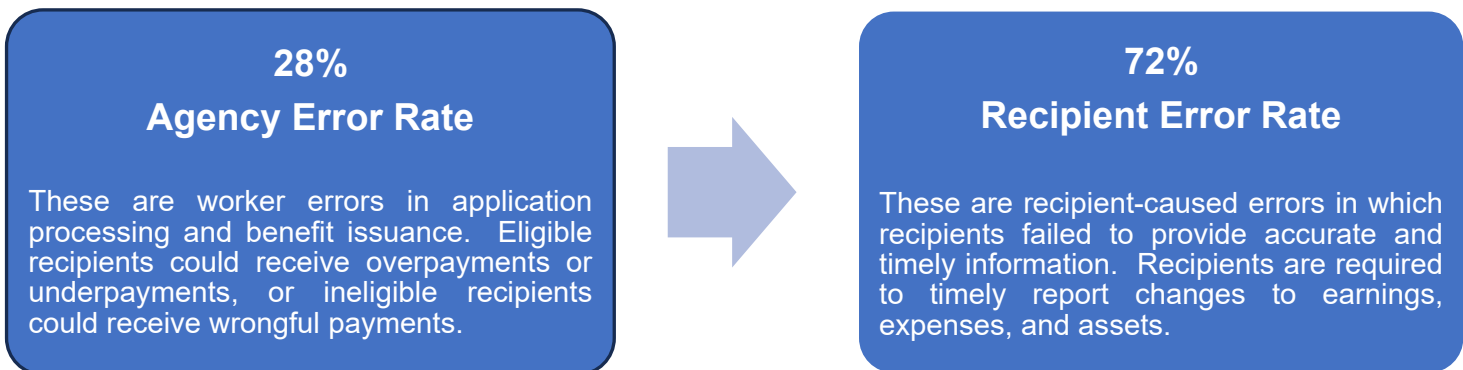
FFY 2025 State Payment Error Rates

Monthly vs. Cumulative Error Rates



Monthly totals are for the individual review month, cumulative totals are the totals of all months added together.

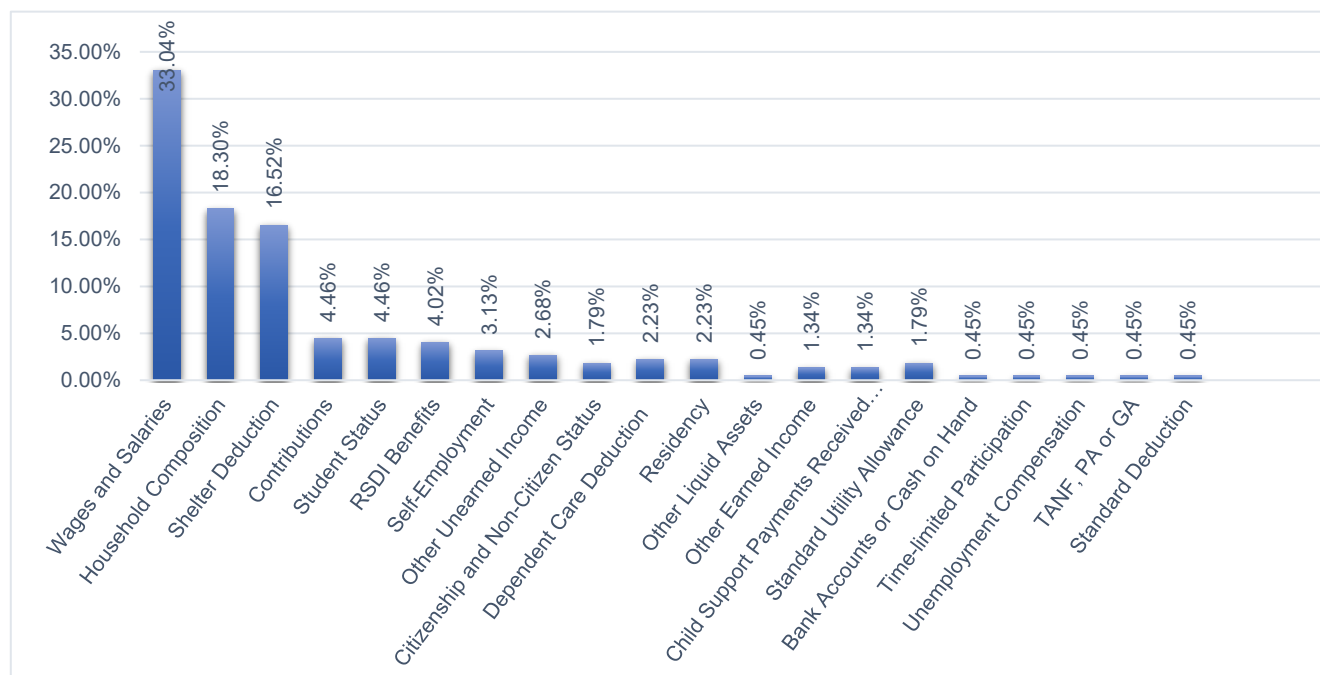
Cumulative Error Breakdown-Are they Agency or Recipient Errors?



FFY 2025 SNAP Error Trends – Cumulative Totals

Cumulative Totals –October 2024- September 2025		
Error Element	Error Amount	Error Percentage
<i>Wages and Salaries</i>	\$20,687	33.04%
<i>Household Composition</i>	\$16,172	18.30%
<i>Shelter Deduction</i>	\$4,736	16.52%
<i>Contributions</i>	\$2,702	4.46%
Student Status	\$2,086	4.46%
RSDI Benefits	\$1,858	4.02%
Self-Employment	\$1,626	3.13%
Other Unearned Income	\$1,372	2.68%
Citizenship and Non-Citizen Status	\$1,268	1.79%
Dependent Care Deduction	\$979	2.23%
Residency	\$933	2.23%
Other Liquid Assets	\$697	0.45%
Other Earned Income	\$580	1.34%
Child Support Payments Received from Absent Parent	\$434	1.34%
Standard Utility Allowance	\$421	1.79%
Bank Accounts or Cash on Hand	\$394	0.45%
Time-limited Participation	\$292	0.45%
Unemployment Compensation	\$221	0.45%
TANF, PA or GA	\$125	0.45%
Standard Deduction	\$84	0.45%
Totals	\$57,667	100.00%

FFY 2025 SNAP Error Trends – Cumulative Totals



FFY 2025 SNAP Payment Error Rates

Regional and County Breakdowns

Percentages are on based total amount of benefits in error divided by the total of benefits issued in the QC sample.

		OCT	NOV	DEC	JAN	FEB	MAR	APR	MAY	JUN	JUL	AUG	SEP	TOTAL AVG.
Region 1 Northwest Region	Cibola	100%	0.00%	0.00%	0.00%	100.00%	0.00%	0.00%	0.00%	0.00%	18.99%	0.00%	19.64%	34.73%
	McKinley	15.27%	1.56%	0.00%	0.00%	0.00%	0.00%	0.00%	7.91%	0.0%	0.00%	8.73%	0.00%	4.09%
	San Juan	11.41%	31.35%	18.24%	0.00%	0.00%	27.70%	0.00%	13.06%	28.20%	0.00%	3.70%	31.56%	15.75%
	Sierra	0.00%	46.19%	0.00%	0.00%	0.00%	20.76%	14.54%	0.00%	0.00%	70.74%	0.00%	0.00%	20.58%
	Socorro	0.00%	0.00%	0.00%	16.15%	23.20%	100%	0.00%	0.00%	0.00%	0.00%	0.00%	0.00%	22.37%
	N. Valencia	0.00%	51.34%	0.00%	0.00%	0.00%	0.00%	0.00%	0.00%	0.00%	59.59%	0.00%	0.00%	4.17%
	S. Valencia	0.00%	0.00%	0.00%	0.00%	0.00%	0.00%	0.00%	0.00%	0.00%	0.00%	0.00%	0.00%	0.00%
Region 1 Totals		23.54%	14.14%	10.77%	5.32%	21.48%	35.37%	2.62%	10.22%	8.24%	14.28%	4.55%	14.35%	12.73%
Region 2 Northeast Region	Colfax	0.00%	43.42%	0.00%	0.00%	0.00%	0.00%	0.00%	0.00%	0.00%	0.00%	0.00%	0.00%	17.73%
	Guadalupe	0.00%	0.00%	0.00%	65.07%	0.00%	0.00%	0.00%	0.00%	0.00%	0.00%	0.00%	0.00%	56.21%
	Quay	0.00%	0.00%	0.00%	0.00%	0.00%	0.00%	0.00%	0.00%	0.00%	0.00%	0.00%	0.00%	0.00%
	Rio Arriba	0.00%	0.00%	0.00%	0.00%	0.00%	48.11%	29.97%	0.00%	22.91%	0.00%	85.29%	0.00%	18.66%
	San Miguel	0.00%	0.00%	15.00%	0.00%	87.59%	92.12%	0.00%	21.31%	7.74%	0.00%	32.11%	0.00%	15.05%
	Sandoval	46.59%	11.31%	19.52%	56.88%	0.00%	10.47%	0.00%	4.49%	60.40%	54.94%	34.66%	0.00%	18.86%
	Santa Fe	10.83%	0.00%	42.25%	40.91%	12.48%	8.27%	32.48%	29.36%	64.98%	0.00%	27.36%	45.98%	23.13%
Taos	0.00%	0.00%	100.00%	0.00%	0.00%	18.95%	0.00%	0.00%	0.00%	56.41%	45.52%	0.00%	25.00%	
Region 2 Totals		21.79%	10.06%	18.09%	31.94%	19.21%	16.78%	13.09%	9.48%	16.20%	24.59%	40.54%	15.57%	19.81%
Region 3 Central Region	NE Bernalillo	20.31%	47.66%	10.89%	20.94%	6.99%	28.77%	35.79%	10.40%	20.75%	0.00%	30.53%	8.36%	22.27%
	NW Bernalillo	0.00%	22.46%	30.45%	15.20%	0.00%	41.83%	0.00%	14.18%	10.32%	7.19%	0.00%	34.53%	17.07%
	SE Bernalillo	0.00%	19.35%	39.32%	6.32%	0.00%	11.89%	0.00%	47.33%	58.06%	31.16%	15.11%	0.00%	23.23%
	SW Bernalillo	33.19%	26.24%	18.51%	31.90%	17.80%	20.78%	6.68%	24.82%	34.64%	15.55%	25.17%	17.27%	23.14%
	Torrance	100.00%	0.00%	0.00%	0.00%	0.00%	0.00%	0.00%	0.00%	0.00%	0.00%	100.00%	0.00%	29.48%
Region 3 Totals		27.93%	28.82%	23.37%	17.64%	5.13%	21.94%	24.67%	19.37%	32.18%	14.93%	26.21%	8.82%	22.27%
Region 4 Southeast Region	Chaves	18.31%	40.00%	0.00%	0.00%	0.00%	20.41%	42.95%	0.00%	0.00%	0.00%	3.22%	100.00%	15.46%
	Curry	50.66%	0.00%	0.00%	0.00%	10.37%	4.73%	0.00%	9.82%	16.20%	0.00%	0.00%	0.00%	7.99%
	Artesia	0.00%	0.00%	0.00%	0.00%	0.00%	0.00%	0.00%	0.00%	0.00%	0.00%	0.00%	0.00%	0.00%
	Carlsbad	0.00%	24.27%	90.97%	46.84%	40.09%	10.89%	0.00%	0.00%	32.54%	0.00%	0.00%	65.20%	29.69%
	Lea	57.43%	0.00%	0.00%	19.06%	6.29%	8.72%	0.00%	0.00%	0.00%	0.00%	0.00%	13.61%	26.47%
	Lincoln	0.00%	0.00%	0.00%	0.00%	0.00%	0.00%	0.00%	0.00%	0.00%	19.40%	0.00%	42.37%	24.76%
Roosevelt	0.00%	0.00%	0.00%	0.00%	0.00%	0.00%	0.00%	0.00%	0.00%	0.00%	0.00%	0.00%	0.00%	
Region 4 Totals		24.43%	15.85%	15.79%	33.42%	11.95%	10.21%	15.58%	2.81%	13.90%	3.63%	4.83%	38.56%	12.77%
Region 5	E. Dona Ana	0.00%	0.00%	0.75%	0.00%	11.44%	0.00%	26.41%	12.66%	25.66%	0.00%	29.53%	0.00%	11.74%
	Grant	0.00%	0.00%	0.00%	0.00%	12.76%	13.02%	0.00%	36.85%	0.00%	0.00%	0.00%	0.00%	15.80%
	Luna	0.00%	0.00%	0.00%	8.56%	0.00%	0.00%	0.00%	11.09%	0.00%	0.00%	0.00%	7.98%	5.16%
	Otero	0.00%	0.00%	0.00%	39.34%	2.79%	0.00%	0.00%	0.00%	26.95%	0.00%	0.00%	0.00%	5.14%
	S. Dona Ana	56.47%	0.00%	0.00%	22.79%	0.00%	0.00%	17.66%	15.42%	37.54%	25.43%	0.00%	0.00%	21.19%
	W. Dona Ana	0.00%	22.13%	0.00%	0.00%	0.00%	13.54%	0.00%	23.95%	0.00%	0.00%	72.34%	13.31%	12.43%
Region 5 Totals		14.65%	5.34%	0.23%	12.91%	6.43%	5.46%	9.97%	14.85%	20.89%	4.45%	43.05%	6.79%	12.01%
State Totals		23.14%	20.04%	14.75%	17.22%	11.77%	16.70%	14.31%	12.08%	19.57%	12.68%	22.12%	17.72%	16.62%

SNAP Payment Error Rates Mitigation Strategies

Identified reasons for cases found in error during the month of September

- **Wages and Salaries**
 - Information withheld by client (Client Caused)
 - Information not reported (Client Caused)
 - Agency failed to follow up on Inconsistent or incomplete information (Agency Caused)
 - Reported information disregarded or not applied. (Agency Caused)
- **Household Composition**
 - Information withheld by client (Client Caused)
 - Incorrect information provided by client (Client Caused)
 - Information not reported (Client Caused)
- **Shelter Deduction**
 - Incorrect information provided by client (Client Caused)
 - Incomplete or incorrect or incorrect information provided (Client Caused)
 - Reported information disregarded or not applied (Agency Caused)
 - Agency failed to follow up on inconsistent or incomplete Information (Agency Caused)

Description of activity developed to resolve deficiencies:

Quality Control reviews are referred to the offices where the error was made for review by the worker and their direct supervisor. County Director written responses are required within ten days of the issuance of the QC finding.

Committees and work groups are developed as needed in review of common error trends and system development or error. These teams consist of County Directors and Line Managers from ISD Regions and the Field Support Bureau, representatives from the ASPEN Help Desk, Policy & Program Development Bureau, Quality Assessment Bureau, and the Training Support Bureau. Staff identify the reason for the error and steps to prevent recurring errors and submit inquiries for policy and procedure clarifications.

Review processes and findings procedures are reviewed and updated consistently to incorporate FNS findings and observations from QC Reviews, Timeliness Technical Assistance Reviews, State Systems Reviews, Payment Accuracy Reviews etc. as well as any new or adjusted legislation, policy, standards or consent decrees as needed or available.

FFY 2025 Case and Procedural Error Rate (CAPER)

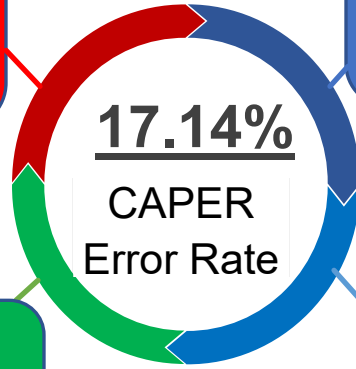
State Cumulative Negative Error Rate

Invalid Closure Breakdown

Out of the 139 invalid denials/closures identified, 86 were identified as an incorrect closure, and 46 were identified as incorrect denials.

Negative Error Amount

139 cases out of 811 were found to have been denied or closed incorrectly. These cases were found to have errors with denial/closure reasons, timeliness, and/or notices.



Incorrect Notices

22% of the incorrect negative actions reported were due to unclear or incorrect notices issued.

Incorrect Denials

78% of the incorrect negative actions reported were due to incorrect denial/closure reasons and/or untimely denials/closures.

Cumulative Totals – October 2024- September 2025

Total Cases in Sample Pulled for Review	851
Cases Dropped (Sampled not Reviewed by QC)	40
Total Cases Reviewed	811
Total Valid Cases	672
Total Invalid Cases	139

FFY 2025 Top Error Trends in CAPER Reviews

Cumulative Totals from CAPER Reviews: October 2024- September 2025

Reason for the Error	When the Errors Occurred		Total Errors	Percent of Cases with Error
	Denials	Terminations		
Rank #1 Notices				
Notice was sent to wrong address	2	13	15	11.54%
Notice not clearly understandable	4	5	9	6.92%
Notice reason does not match reason for action	0	3	3	2.31%
Failed to send notice of action	0	2	2	1.54%
Notice was not complete	0	1	1	0.77%
Policy incorrectly applied – no other codes applicable	1	0	1	0.77%
Total	7	24	31	23.85%
Rank #2: Application				
Late denial agency failed to process the application timely	11	3	14	10.77%
Denial before the 30th day	1	3	4	3.08%
Failed to process the reapplication timely (recertification application)	0	4	4	3.08%
Policy incorrectly applied – no other codes applicable	0	2	2	1.54%
Failed to issue a required Notice of Missed Interview (NOMI)	1	0	1	0.77%
Total	13	12	25	19.23%
Rank #3: Action Type				
Policy incorrectly applied –No other codes applicable	7	6	13	10.00%
Improper termination or suspension for failure to meet reporting requirements	0	6	6	4.62%
Total	7	12	19	14.62%
Rank #4: Wages and Salaries				
Failed to consider or incorrectly considered reported information	4	2	6	4.62%
Improper income calculation	3	1	4	3.08%
Agency failed to follow up on inconsistent or incomplete information	3	0	3	2.31%
Policy incorrectly applied – no other codes applicable	2	0	2	1.54%
Improper calculation - Income averaged incorrectly	0	1	1	0.77%
Agency failed to follow up on known and reported impending changes	0	1	1	0.77%
Total	12	5	17	13.08%
Rank #5 Residency				
Agency failed to follow up on inconsistent or incomplete information	0	6	6	4.62%
Policy incorrectly applied – no other codes applicable	0	4	4	3.08%
Other	0	3	3	2.31%
Improper denial or termination, not out of the project area	0	3	3	2.31%
Total	0	16	16	13.22%

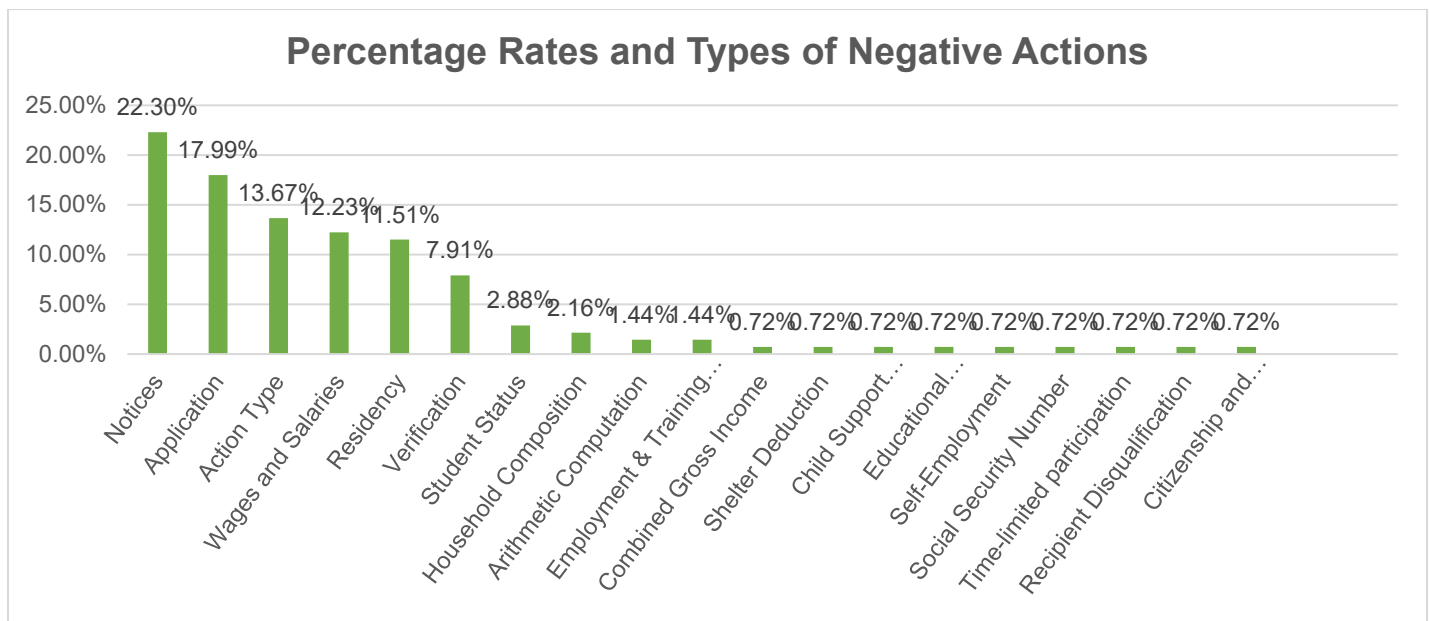
Rank #6 Verification				
Agency failed to follow up on inconsistent or incomplete information	0	3	3	2.31%
Improper Denial/Termination - failure to provide - verification was received or is in case file	2	1	3	2.31%
Policy incorrectly applied – no other codes applicable	1	12	3	2.31%
Verification was in case file	1	0	1	0.77%
Agency failed to follow up on known and reported impending changes	0	1	1	0.77%
Total	4	7	11	8.46%
Rank #7 Student Status				
Agency failed to follow up on inconsistent or incomplete information	3	0	3	2.31%
Failed to consider or incorrectly considered Eligible Student Status	1	0	1	0.77%
Total	4	0	4	3.08%
Rank #8 Household Composition				
Ineligible person(s) included	1	0	1	0.77%
Agency failed to follow up on inconsistent or incomplete information	1	0	1	0.77%
Policy incorrectly applied – no other codes applicable	0	1	1	0.77%
Total	2	1	3	2.31%
Rank #9 Arithmetic Computation				
Benefit/allotment/eligibility incorrectly computed	1	1	2	1.54%
Total	1	1	2	1.54%
Rank #10 Employment & Training Programs				
Agency failed to follow up on known and reported impending changes	0	1	1	0.77%
Failure to cooperate with work program when not required to register for work program	0	1	1	0.77%
Total	0	2	2	1.54%

FFY 2025 CAPER Errors – Cumulative Totals

Percentage Rates and Types of Negative Actions: October 2024- September 2025

Error	Denials		Closures		Total Invalid	Percentage Total
Notices	7	5.04%	24	17.27%	31	22.30%
Application	13	9.35%	12	8.63%	25	17.99%
Action Type	7	5.04%	12	8.63%	19	13.67%
Wages and Salaries	12	8.63%	5	3.60%	17	12.23%
Residency	0	0.00%	16	11.51%	16	11.51%
Verification	4	2.88%	7	5.04%	11	7.91%
Student Status	4	2.88%	0	0.00%	4	2.88%
Household Composition	2	1.44%	1	0.72%	3	2.16%
Arithmetic Computation	1	0.72%	1	0.72%	2	1.44%
Employment & Training Programs	0	0.00%	2	1.44%	2	1.44%
Combined Gross Income	0	0.00%	1	0.72%	1	0.72%

Shelter Deduction	1	0.72%	0	0.00%	1	0.72%
Child Support Payments Received from Absent Parent	1	0.72%	0	0.00%	1	0.72%
Educational Grants/Scholarships/Loans	0	0.00%	1	0.72%	1	0.72%
Self-Employment	1	0.72%	0	0.00%	1	0.72%
Social Security Number	0	0.00%	1	0.72%	1	0.72%
Time-limited participation	0	0.00%	1	0.72%	1	0.72%
Recipient Disqualification	0	0.00%	1	0.72%	1	0.72%
Citizenship and Non Citizen Status	0	0.00%	1	0.72%	1	0.72%
Total	53	38.13%	86	61.87%	139	100.00%



FFY 2025 CAPER Error Rates

Regional and County Breakdowns: October 2024- September 2025

		OCT	NOV	DEC	JAN	FEB	MAR	APR	MAY	JUN	JUL	AUG	SEP	TOTAL AVG.
Region 1 Northwest Region	Cibola	0.00%	25.00%	0.00%	0.00%	0.00%	0.00%	0.00%	0.00%	0.00%	0.00%	0.00%	0.00%	7.69%
	McKinley	0.00%	0.00%	20.00%	0.00%	33.33%	0.00%	33.33%	0.00%	50.00%	33.33%	33.33%	0.00%	20.00%
	San Juan	0.00%	20.00%	0.00%	25.00%	0.00%	0.00%	0.00%	28.57%	14.29%	28.57%	33.33%	0.00%	17.02%
	Sierra	0.00%	0.00%	0.00%	33.00%	0.00%	0.00%	0.00%	0.00%	100%	0.00%	0.00%	0.00%	25.00%
	Socorro	0.00%	0.00%	0.00%	0.00%	0.00%	0.00%	100%	0.00%	0.00%	0.00%	0.00%	0.00%	20.00%
	N. Valencia	25.00%	0.00%	0.00%	0.00%	0.00%	100%	0.00%	0.00%	0.00%	0.00%	100.00%	0.00%	14.29%
	S. Valencia	0.00%	0.00%	0.00%	0.00%	0.00%	0.00%	0.00%	0.00%	0.00%	0.00%	0.00%	0.00%	0.00%
Region 1 Totals		11.11%	13.33%	6.67%	16.67%	11.11%	8.33	20.00%	16.67%	23.08%	36.36%	22.22%	11.11%	16.18%
Region 2 Northeast Region	Colfax	0.00%	0.00%	0.00%	100.00%	0.00%	0.00%	0.00%	0.00%	0.00%	0.00%	100.00%	0.00%	33.33%
	Guadalupe	0.00%	0.00%	0.00%	0.00%	0.00%	0.00%	0.00%	0.00%	0.00%	0.00%	0.00%	0.00%	0.00%
	Quay	0.00%	0.00%	0.00%	0.00%	0.00%	0.00%	0.00%	0.00%	0.00%	0.00%	0.00%	0.00%	0.00%
	Rio Arriba	0.00%	100.00%	0.00%	100.00%	0.00%	0.00%	100%	0.00%	50.00%	0.00%	0.00%	33.33%	19.23%
	San Miguel	50.00%	0.00%	0.00%	0.00%	50.00%	0.00%	0.00%	100.00%	0.00%	0.00%	50.00%	0.00%	11.68%
	Sandoval	25.00%	0.00%	0.00%	0.00%	100.00%	100%	0.00%	0.00%	0.00%	50.00%	100.00%	0.00%	27.59%
	Santa Fe	0.00%	0.00%	0.00%	0.00%	50.00%	0.00%	11.11%	25.00%	20.00%	25.00%	0.00%	0.00%	12.24%
Taos	0.00%	0.00%	0.00%	50.00%	0.00%	0.00%	0.00%	0.00%	0.00%	0.00%	0.00%	0.00%	11.11%	
Region 2 Totals		14.29%	11.11%	0.00%	33.33%	50.00%	75.00%	15.38%	22.22%	22.22%	23.53%	30.00%	6.67%	20.00%
Region 3 Central Region	NE Bernalillo	10.00%	37.50%	11.11%	22.22%	18.18%	11.11%	28.57%	11.11%	11.11%	0.00%	12.50%	9.09%	36.90%
	NW Bernalillo	0.00%	50.00%	0.00%	33.33%	25.00%	40.00%	0.00%	14.29%	0.00%	0.00%	0.00%	0.00%	15.25%
	SE Bernalillo	0.00%	0.00%	0.00%	16.67%	0.00%	40.00%	33.33%	0.00%	25.00%	20.00%	0.00%	0.00%	12.50%
	SW Bernalillo	25.00%	25.00%	14.29%	25.00%	50.00%	0.00%	25.00%	0.00%	0.00%	33.33%	33.33%	0.00%	16.67%
	Torrance	50.00%	0.00%	50.00%	33.33%	0.00%	100.00%	0.00%	0.00%	66.67%	0.00%	0.00%	0.00%	35.29%
Region 3 Totals		13.04%	26.32%	13.04%	25.00%	18.18%	26.09%	21.05%	8.00%	15.38%	12.50%	11.11%	4.35%	16.30%
Region 4 Southeast Region	Chaves	0.00%	0.00%	33.33%	20.00%	0.00%	25.00%	0.00%	0.00%	0.00%	50.00%	25.00%	0.00%	29.41%
	Curry	100.00%	0.00%	0.00%	0.00%	0.00%	0.00%	0.00%	0.00%	0.00%	0.00%	0.00%	100.00%	11.76%
	Artesia	0.00%	0.00%	0.00%	0.00%	0.00%	0.00%	0.00%	0.00%	0.00%	0.00%	0.00%	0.00%	0.00%
	Carlsbad	0.00%	25.00%	0.00%	0.00%	0.00%	0.00%	50.00%	0.00%	0.00%	0.00%	25.00%	0.00%	17.65%
	Lea	0.00%	0.00%	0.00%	100.00%	25.00%	0.00%	33.33%	50.00%	0.00%	0.00%	0.00%	66.67%	41.18%
	Lincoln	0.00%	0.00%	0.00%	0.00%	0.00%	0.00%	0.00%	0.00%	0.00%	0.00%	0.00%	0.00%	0.00%
Roosevelt	0.00%	0.00%	0.00%	0.00%	0.00%	0.00%	0.00%	0.00%	0.00%	0.00%	0.00%	0.00%	0.00%	
Region 4 Totals		20.00%	9.09%	14.29%	27.27%	11.11%	20.00%	18.18%	16.67%	0.00%	8.33%	12.50%	60.00%	100.00%
Region 5 Southwest Region	E. Dona Ana	100.00%	33.33%	0.00%	50.00%	0.00%	20.00%	33.33%	20.00%	0.00%	0.00%	50.00%	50.00%	25.00%
	Grant	0.00%	0.00%	0.00%	0.00%	0.00%	0.00%	0.00%	0.00%	0.00%	0.00%	0.00%	0.00%	0.00%
	Luna	0.00%	50.00%	0.00%	0.00%	0.00%	0.00%	25.00%	0.00%	0.00%	0.00%	20.00%	0.00%	10.71%
	Otero	0.00%	100.00%	33.33%	100.00%	0.00%	33.33%	0.00	0.00%	50.00%	0.00%	0.00%	0.00%	17.86%
	S. Dona Ana	0.00%	0.00%	0.00%	0.00%	0.00%	0.00%	0.00%	0.00%	0.00%	0.00%	50.00%	0.00%	10.71%
W. Dona Ana	20.00%	0.00%	0.00%	0.00%	0.00%	16.67%	0.00%	42.86%	100%	0.00%	20.00%	0.00%	25.00%	
Region 5 Totals		20.00%	23.08%	16.67%	25.00%	0.00%	16.67%	12.50%	25.00%	22.22%	0.00%	31.25%	17.65%	100.00%
State Totals		14.93%	17.91%	9.38%	25.00%	17.39%	20.59%	17.39%	16.18%	16.92%	16.18%	20.29%	13.04%	100.00%

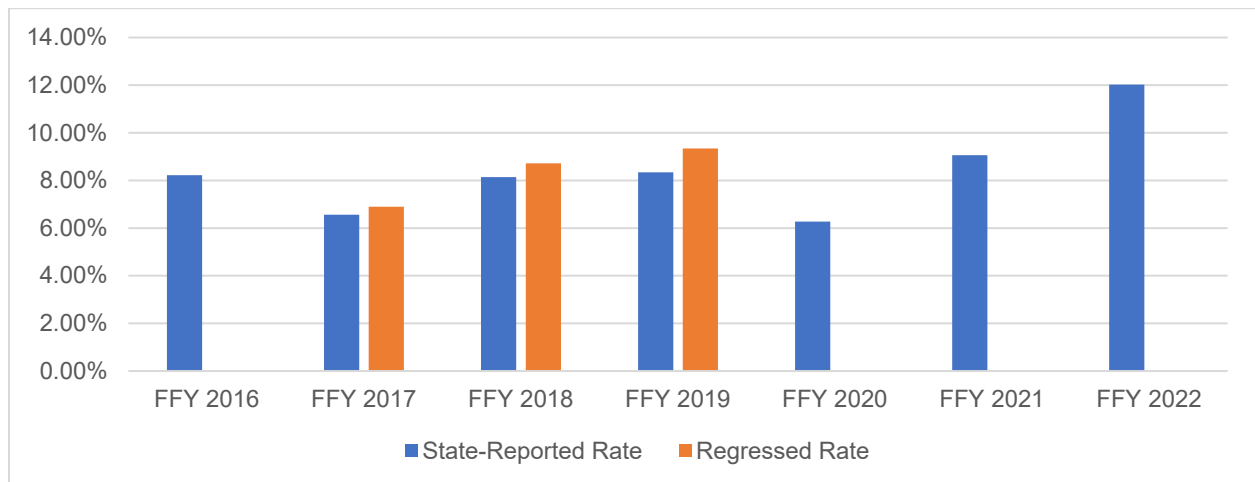
FFY 2025 Regression Rates

Regression rates are calculated by FNS and depend on such variables as FNS reviews of QC-reviewed cases and the State's caseload size. The following charts give the State-reported error rates and the regression rates for Payment Accuracy and CAPER.

*****Please note that regression rates were not issued for FFY 2016 and FFY 2020. A CAPER regression rate for FFY 2019 and FFY 2020 was not issued. FFY 2021, FFY 2022, FFY 2023 and current data for FFY 2025 have not been issued at the time of this report.**

Payment Error Rate

Current Fiscal Year and Previous Fiscal Years



CAPER Error Rate

Current Fiscal Year and Previous Fiscal Years

